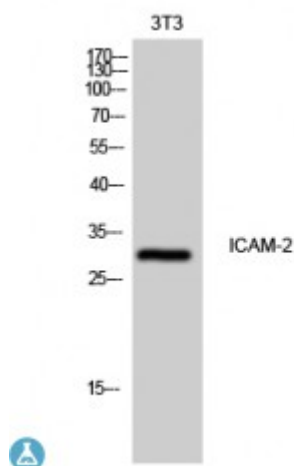


Anti-ICAM-2 antibody



Description	Rabbit polyclonal to ICAM-2.
Model	STJ93635
Host	Rabbit
Reactivity	Human
Applications	ELISA, WB
Immunogen	Synthesized peptide derived from human ICAM-2
Immunogen Region	120-200 aa, Internal
Gene ID	3384
Gene Symbol	ICAM2
Dilution range	WB 1:500-1:2000ELISA 1:10000
Specificity	ICAM-2 Polyclonal Antibody detects endogenous levels of ICAM-2 protein.
Purification	The antibody was affinity-purified from rabbit antiserum by affinity-chromatography using epitope-specific immunogen.
Note	For Research Use Only (RUO).
Protein Name	Intercellular adhesion molecule 2 ICAM-2 CD antigen CD102
Molecular Weight	30 kDa
Clonality	Polyclonal
Conjugation	Unconjugated
Isotype	IgG

Formulation	Liquid in PBS containing 50% glycerol, 0.5% BSA and 0.02% sodium azide.
Concentration	1 mg/ml
Storage Instruction	Store at -20°C, and avoid repeat freeze-thaw cycles.
Database Links	HGNC:5345OMIM:146630
Alternative Names	Intercellular adhesion molecule 2 ICAM-2 CD antigen CD102
Function	ICAM proteins are ligands for the leukocyte adhesion protein LFA-1 (integrin alpha-L/beta-2). ICAM2 may play a role in lymphocyte recirculation by blocking LFA-1-dependent cell adhesion. It mediates adhesive interactions important for antigen-specific immune response, NK-cell mediated clearance, lymphocyte recirculation, and other cellular interactions important for immune response and surveillance.
Cellular Localization	Membrane. Single-pass type I membrane protein.

St John's Laboratory Ltd

F +44 (0)207 681 2580

T +44 (0)208 223 3081

W <http://www.stjohnslabs.com/>

E info@stjohnslabs.com