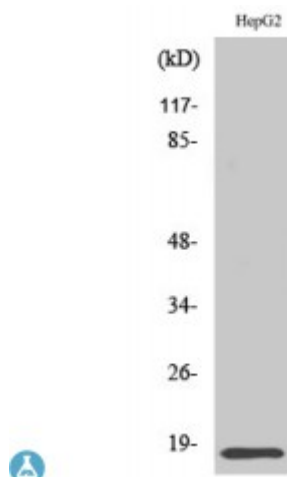


Anti-Id4 antibody



Description	Rabbit polyclonal to Id4.
Model	STJ93637
Host	Rabbit
Reactivity	Human, Mouse, Rat
Applications	ELISA, IHC, WB
Immunogen	Synthesized peptide derived from human Id4
Immunogen Region	1-80 aa, N-terminal
Gene ID	3400
Gene Symbol	ID4
Dilution range	WB 1:500-1:2000IHC 1:100-1:300ELISA 1:20000
Specificity	Id4 Polyclonal Antibody detects endogenous levels of Id4 protein.
Purification	The antibody was affinity-purified from rabbit antiserum by affinity-chromatography using epitope-specific immunogen.
Note	For Research Use Only (RUO).
Protein Name	DNA-binding protein inhibitor ID-4 Class B basic helix-loop-helix protein 27 bHLHb27 Inhibitor of DNA binding 4 Inhibitor of differentiation 4
Molecular Weight	24 kDa
Clonality	Polyclonal
Conjugation	Unconjugated

Isotype	IgG
Formulation	Liquid in PBS containing 50% glycerol, 0.5% BSA and 0.02% sodium azide.
Concentration	1 mg/ml
Storage Instruction	Store at -20°C, and avoid repeat freeze-thaw cycles.
Database Links	HGNC:5363 OMIM:600581
Alternative Names	DNA-binding protein inhibitor ID-4 Class B basic helix-loop-helix protein 27 bHLHb27 Inhibitor of DNA binding 4 Inhibitor of differentiation 4
Function	Transcriptional regulator (lacking a basic DNA binding domain) which negatively regulates the basic helix-loop-helix (bHLH) transcription factors by forming heterodimers and inhibiting their DNA binding and transcriptional activity. Implicated in regulating a variety of cellular processes, including cellular growth, senescence, differentiation, apoptosis, angiogenesis, and neoplastic transformation .
Cellular Localization	Nucleus.

St John's Laboratory Ltd

F +44 (0)207 681 2580

T +44 (0)208 223 3081

W <http://www.stjohnslabs.com/>

E info@stjohnslabs.com