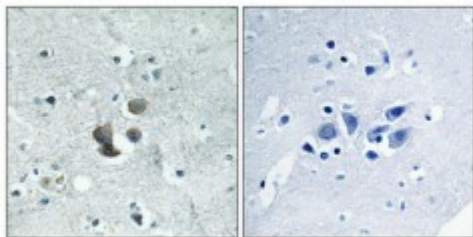


Anti-IGFBP7 antibody



Description	Rabbit polyclonal to IGFBP7.
Model	STJ93652
Host	Rabbit
Reactivity	Human, Mouse, Rat
Applications	ELISA, IHC
Immunogen	Synthesized peptide derived from human IGFBP7
Immunogen Region	160-240 aa, C-terminal
Gene ID	3490
Gene Symbol	IGFBP7
Dilution range	IHC 1:100-1:300ELISA 1:40000
Specificity	IGFBP7 Polyclonal Antibody detects endogenous levels of IGFBP7 protein.
Purification	The antibody was affinity-purified from rabbit antiserum by affinity-chromatography using epitope-specific immunogen.
Note	For Research Use Only (RUO).
Protein Name	Insulin-like growth factor-binding protein 7 IBP-7 IGF-binding protein 7 IGFBP-7 IGFBP-rP1 MAC25 protein PGI2-stimulating factor Prostacyclin-stimulating factor Tumor-derived adhesion factor TAF
Molecular Weight	29.13 kDa
Clonality	Polyclonal
Conjugation	Unconjugated

Isotype	IgG
Formulation	Liquid in PBS containing 50% glycerol, 0.5% BSA and 0.02% sodium azide.
Concentration	1 mg/ml
Storage Instruction	Store at -20°C, and avoid repeat freeze-thaw cycles.
Database Links	HGNC:5476 OMIM:602867
Alternative Names	Insulin-like growth factor-binding protein 7 IBP-7 IGF-binding protein 7 IGFBP-7 IGFBP-rP1 MAC25 protein PGI2-stimulating factor Prostacyclin-stimulating factor Tumor-derived adhesion factor TAF
Function	Binds IGF-I and IGF-II with a relatively low affinity. Stimulates prostacyclin (PGI2) production. Stimulates cell adhesion.
Cellular Localization	Secreted.
Post-translational Modifications	N-glycosylated.

St John's Laboratory Ltd

F +44 (0)207 681 2580

T +44 (0)208 223 3081

W <http://www.stjohnslabs.com/>

E info@stjohnslabs.com