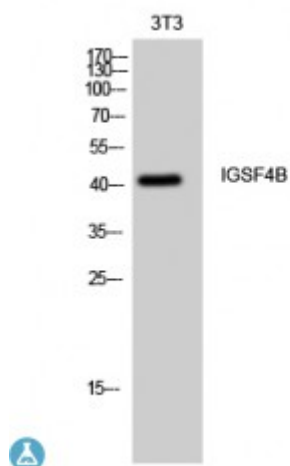


Anti-IGSF4B antibody



Description	Rabbit polyclonal to IGSF4B.
Model	STJ93659
Host	Rabbit
Reactivity	Human, Mouse, Rat
Applications	ELISA, IF, IHC, WB
Immunogen	Synthesized peptide derived from human IGSF4B
Immunogen Region	110-190 aa, Internal
Gene ID	57863
Gene Symbol	CADM3
Dilution range	WB 1:500-1:2000IHC 1:100-1:300IF 1:200-1:1000ELISA 1:5000
Specificity	IGSF4B Polyclonal Antibody detects endogenous levels of IGSF4B protein.
Tissue Specificity	Isoform 1 is expressed mainly in adult and fetal brain. Isoform 2 is highly expressed in adult brain and weakly expressed in placenta. In brain, Isoform 2 is highly expressed in cerebellum.
Purification	The antibody was affinity-purified from rabbit antiserum by affinity-chromatography using epitope-specific immunogen.
Note	For Research Use Only (RUO).
Protein Name	Cell adhesion molecule 3 Brain immunoglobulin receptor Immunoglobulin superfamily member 4B IgSF4B Nectin-like protein 1 NECL-1 Synaptic cell adhesion molecule 3 SynCAM3 TSLC1-like protein 1 TSLL1

Molecular Weight	43 kDa
Clonality	Polyclonal
Conjugation	Unconjugated
Isotype	IgG
Formulation	Liquid in PBS containing 50% glycerol, 0.5% BSA and 0.02% sodium azide.
Concentration	1 mg/ml
Storage Instruction	Store at -20°C, and avoid repeat freeze-thaw cycles.
Database Links	HGNC:17601OMIM:609743
Alternative Names	Cell adhesion molecule 3 Brain immunoglobulin receptor Immunoglobulin superfamily member 4B IgSF4B Nectin-like protein 1 NECL-1 Synaptic cell adhesion molecule 3 SynCAM3 TSLC1-like protein 1 TSLL1
Function	Involved in the cell-cell adhesion. Has both calcium-independent homophilic cell-cell adhesion activity and calcium-independent heterophilic cell-cell adhesion activity with IGSF4, NECTIN1 and NECTIN3. Interaction with EPB41L1 may regulate structure or function of cell-cell junctions .
Sequence and Domain Family	The cytoplasmic region mediates interaction with EPB41L1, DLG3, MPP6 and CASK.
Cellular Localization	Cell membrane Cell junction