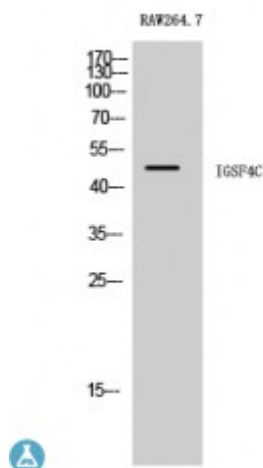


## Anti-CADM4 antibody



<b>Description</b>	Rabbit polyclonal to CADM4.
<b>Model</b>	STJ93660
<b>Host</b>	Rabbit
<b>Reactivity</b>	Human, Mouse, Rat
<b>Applications</b>	ELISA, IF, IHC, WB
<b>Immunogen</b>	Synthesized peptide derived from human IGSF4C
<b>Immunogen Region</b>	320-400 aa, C-terminal
<b>Gene ID</b>	<a href="#">199731</a>
<b>Gene Symbol</b>	<a href="#">CADM4</a>
<b>Dilution range</b>	WB 1:500-1:2000IHC 1:100-1:300IF 1:200-1:1000ELISA 1:20000
<b>Specificity</b>	IGSF4C Polyclonal Antibody detects endogenous levels of IGSF4C protein.
<b>Tissue Specificity</b>	Expressed in brain, prostate, brain, kidney and some other organs.
<b>Purification</b>	The antibody was affinity-purified from rabbit antiserum by affinity-chromatography using epitope-specific immunogen.
<b>Note</b>	For Research Use Only (RUO).
<b>Protein Name</b>	Cell adhesion molecule 4 Immunoglobulin superfamily member 4C IGSF4C Nectin-like protein 4 NECL-4 TSLC1-like protein 2
<b>Molecular Weight</b>	48 kDa
<b>Clonality</b>	Polyclonal

<b>Conjugation</b>	Unconjugated
<b>Isotype</b>	IgG
<b>Formulation</b>	Liquid in PBS containing 50% glycerol, 0.5% BSA and 0.02% sodium azide.
<b>Concentration</b>	1 mg/ml
<b>Storage Instruction</b>	Store at -20°C, and avoid repeat freeze-thaw cycles.
<b>Database Links</b>	<a href="#">HGNC:30825OMIM:609744</a>
<b>Alternative Names</b>	Cell adhesion molecule 4 Immunoglobulin superfamily member 4C IgSF4C Nectin-like protein 4 NECL-4 TSLC1-like protein 2
<b>Function</b>	Involved in the cell-cell adhesion. Has calcium- and magnesium-independent cell-cell adhesion activity. May have tumor-suppressor activity.
<b>Cellular Localization</b>	Membrane
<b>Post-translational Modifications</b>	N-glycosylated.

---

**St John's Laboratory Ltd**

**F** +44 (0)207 681 2580

**T** +44 (0)208 223 3081

**W** <http://www.stjohnslabs.com/>

**E** [info@stjohnslabs.com](mailto:info@stjohnslabs.com)