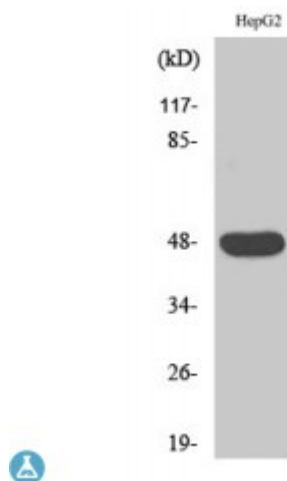


## Anti-IGSF4D antibody



|                         |   |
|-------------------------|---|
| <b>Description</b>      | Rabbit polyclonal to IGSF4D.  |
| <b>Model</b>            | STJ93661  |
| <b>Host</b>             | Rabbit  |
| <b>Reactivity</b>       | Human, Mouse, Rat   |
| <b>Applications</b>     | ELISA, IF, IHC, WB  |
| <b>Immunogen</b>        | Synthesized peptide derived from human IGSF4D   |
| <b>Immunogen Region</b> | 100-180 aa, Internal  |
| <b>Gene ID</b>          | <a href="#">253559</a>  |
| <b>Gene Symbol</b>      | <a href="#">CADM2</a>   |
| <b>Dilution range</b>   | WB 1:500-1:2000IHC 1:100-1:300IF 1:200-1:1000ELISA 1:10000  |
| <b>Specificity</b>      | IGSF4D Polyclonal Antibody detects endogenous levels of IGSF4D protein.   |
| <b>Purification</b>     | The antibody was affinity-purified from rabbit antiserum by affinity-chromatography using epitope-specific immunogen.                           |
| <b>Note</b>             | For Research Use Only (RUO).  |
| <b>Protein Name</b>     | Cell adhesion molecule 2 Immunoglobulin superfamily member 4D IgSF4D<br>Nectin-like protein 3 NECL-3 Synaptic cell adhesion molecule 2 SynCAM 2 |
| <b>Molecular Weight</b> | 47 kDa  |
| <b>Clonality</b>        | Polyclonal  |
| <b>Conjugation</b>      | Unconjugated  |

|                              |  |
|------------------------------|--|
| <b>Isotype</b>               | IgG  |
| <b>Formulation</b>           | Liquid in PBS containing 50% glycerol, 0.5% BSA and 0.02% sodium azide.  |
| <b>Concentration</b>         | 1 mg/ml  |
| <b>Storage Instruction</b>   | Store at -20°C, and avoid repeat freeze-thaw cycles.   |
| <b>Database Links</b>        | <a href="#">HGNC:29849</a> <a href="#">OMIM:609938</a>   |
| <b>Alternative Names</b>     | Cell adhesion molecule 2 Immunoglobulin superfamily member 4D IgSF4D<br>Nectin-like protein 3 NECL-3 Synaptic cell adhesion molecule 2 SynCAM 2  |
| <b>Function</b>              | Adhesion molecule that engages in homo- and heterophilic interactions with the other nectin-like family members, leading to cell aggregation. Important for synapse organization, providing regulated trans-synaptic adhesion. Preferentially binds to oligodendrocytes. |
| <b>Cellular Localization</b> | Cell membrane Cell junction, synapse Cell projection, axon. Found in the axoplasm of myelinated axons.   |

---

**St John's Laboratory Ltd**

**F** +44 (0)207 681 2580

**T** +44 (0)208 223 3081

**W** <http://www.stjohnslabs.com/>

**E** [info@stjohnslabs.com](mailto:info@stjohnslabs.com)