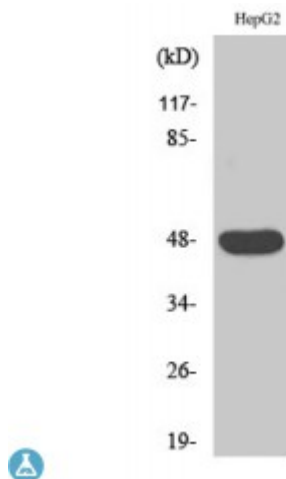


Anti-IGSF4D antibody



Description	Rabbit polyclonal to IGSF4D.
Model	STJ93661
Host	Rabbit
Reactivity	Human, Mouse, Rat
Applications	ELISA, IF, IHC, WB
Immunogen	Synthesized peptide derived from human IGSF4D
Immunogen Region	100-180 aa, Internal
Gene ID	253559
Gene Symbol	CADM2
Dilution range	WB 1:500-1:2000IHC 1:100-1:300IF 1:200-1:1000ELISA 1:10000
Specificity	IGSF4D Polyclonal Antibody detects endogenous levels of IGSF4D protein.
Purification	The antibody was affinity-purified from rabbit antiserum by affinity-chromatography using epitope-specific immunogen.
Note	For Research Use Only (RUO).
Protein Name	Cell adhesion molecule 2 Immunoglobulin superfamily member 4D IgSF4D Nectin-like protein 3 NECL-3 Synaptic cell adhesion molecule 2 SynCAM 2
Molecular Weight	47 kDa
Clonality	Polyclonal
Conjugation	Unconjugated

Isotype	IgG
Formulation	Liquid in PBS containing 50% glycerol, 0.5% BSA and 0.02% sodium azide.
Concentration	1 mg/ml
Storage Instruction	Store at -20°C, and avoid repeat freeze-thaw cycles.
Database Links	HGNC:29849 OMIM:609938
Alternative Names	Cell adhesion molecule 2 Immunoglobulin superfamily member 4D IgSF4D Nectin-like protein 3 NECL-3 Synaptic cell adhesion molecule 2 SynCAM 2
Function	Adhesion molecule that engages in homo- and heterophilic interactions with the other nectin-like family members, leading to cell aggregation. Important for synapse organization, providing regulated trans-synaptic adhesion. Preferentially binds to oligodendrocytes.
Cellular Localization	Cell membrane Cell junction, synapse Cell projection, axon. Found in the axoplasm of myelinated axons.

St John's Laboratory Ltd

F +44 (0)207 681 2580

T +44 (0)208 223 3081

W <http://www.stjohnslabs.com/>

E info@stjohnslabs.com