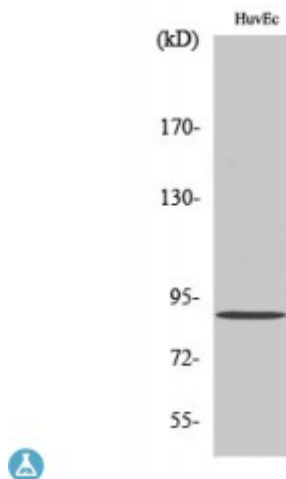


## Anti-iPLA2gamma antibody



<b>Description</b>	Rabbit polyclonal to iPLA2gamma.
<b>Model</b>	STJ93748
<b>Host</b>	Rabbit
<b>Reactivity</b>	Human, Mouse
<b>Applications</b>	#N/A
<b>Immunogen</b>	Synthesized peptide derived from human iPLA2gamma
<b>Immunogen Region</b>	660-740 aa, C-terminal
<b>Gene ID</b>	<a href="#">50640</a>
<b>Gene Symbol</b>	<a href="#">PNPLA8</a>
<b>Dilution range</b>	WB 1:500-1:2000ELISA 1:40000
<b>Specificity</b>	iPLA2gamma Polyclonal Antibody detects endogenous levels of iPLA2gamma protein.
<b>Tissue Specificity</b>	Expressed in parenchymal tissues including heart, skeletal muscle, placenta, brain, liver and pancreas. Also expressed in bronchial epithelial cells and kidney. Highest expression is observed in skeletal muscle and heart.
<b>Purification</b>	The antibody was affinity-purified from rabbit antiserum by affinity-chromatography using epitope-specific immunogen.
<b>Note</b>	For Research Use Only (RUO).
<b>Protein Name</b>	Calcium-independent phospholipase A2-gamma Intracellular membrane-associated calcium-independent phospholipase A2 gamma iPLA2-gamma PNPLA-gamma Patatin-like phospholipase domain-containing protein 8

	iPLA2-2
<b>Molecular Weight</b>	88 kDa
<b>Clonality</b>	Polyclonal
<b>Conjugation</b>	Unconjugated
<b>Isotype</b>	IgG
<b>Formulation</b>	Liquid in PBS containing 50% glycerol, 0.5% BSA and 0.02% sodium azide.
<b>Concentration</b>	1 mg/ml
<b>Storage Instruction</b>	Store at -20°C, and avoid repeat freeze-thaw cycles.
<b>Database Links</b>	<a href="https://www.ncbi.nlm.nih.gov/condensedbook/condensedbook.cgi?acc=HGNC:28900OMIM:251950">HGNC:28900OMIM:251950</a>
<b>Alternative Names</b>	Calcium-independent phospholipase A2-gamma antibody Intracellular membrane-associated calcium-independent phospholipase A2 gamma antibody iPLA2-gamma antibody PNPLA-gamma antibody Patatin-like phospholipase domain-containing protein 8 antibody iPLA2-2 antibody IPLA22 antibody IPLA2G antibody BM-043 antibody
<b>Function</b>	Calcium-independent phospholipase A2, which catalyzes the hydrolysis of the sn-2 position of glycerophospholipids, PtdSer and to a lower extent PtdCho. Cleaves membrane phospholipids.
<b>Cellular Localization</b>	Endoplasmic reticulum membrane Golgi apparatus membrane Cytoplasm, perinuclear region