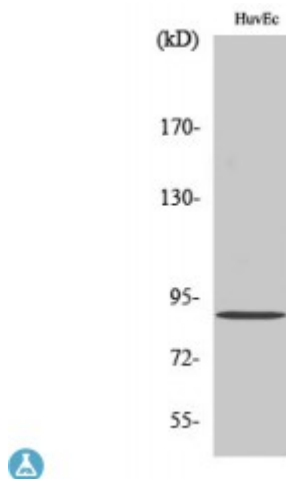


Anti-iPLA2gamma antibody



Description	Rabbit polyclonal to iPLA2gamma.
Model	STJ93748
Host	Rabbit
Reactivity	Human, Mouse
Applications	#N/A
Immunogen	Synthesized peptide derived from human iPLA2gamma
Immunogen Region	660-740 aa, C-terminal
Gene ID	50640
Gene Symbol	PNPLA8
Dilution range	WB 1:500-1:2000ELISA 1:40000
Specificity	iPLA2gamma Polyclonal Antibody detects endogenous levels of iPLA2gamma protein.
Tissue Specificity	Expressed in parenchymal tissues including heart, skeletal muscle, placenta, brain, liver and pancreas. Also expressed in bronchial epithelial cells and kidney. Highest expression is observed in skeletal muscle and heart.
Purification	The antibody was affinity-purified from rabbit antiserum by affinity-chromatography using epitope-specific immunogen.
Note	For Research Use Only (RUO).
Protein Name	Calcium-independent phospholipase A2-gamma Intracellular membrane-associated calcium-independent phospholipase A2 gamma iPLA2-gamma PNPLA-gamma Patatin-like phospholipase domain-containing protein 8

	iPLA2-2
Molecular Weight	88 kDa
Clonality	Polyclonal
Conjugation	Unconjugated
Isotype	IgG
Formulation	Liquid in PBS containing 50% glycerol, 0.5% BSA and 0.02% sodium azide.
Concentration	1 mg/ml
Storage Instruction	Store at -20°C, and avoid repeat freeze-thaw cycles.
Database Links	HGNC:289000MIM:251950
Alternative Names	Calcium-independent phospholipase A2-gamma antibody Intracellular membrane-associated calcium-independent phospholipase A2 gamma antibody iPLA2-gamma antibody PNPLA-gamma antibody Patatin-like phospholipase domain-containing protein 8 antibody iPLA2-2 antibody IPLA22 antibody IPLA2G antibody BM-043 antibody
Function	Calcium-independent phospholipase A2, which catalyzes the hydrolysis of the sn-2 position of glycerophospholipids, PtdSer and to a lower extent PtdCho. Cleaves membrane phospholipids.
Cellular Localization	Endoplasmic reticulum membrane Golgi apparatus membrane Cytoplasm, perinuclear region