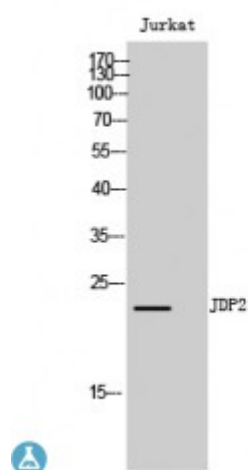


Anti-JDP2 antibody



Description	Rabbit polyclonal to JDP2.
Model	STJ93797
Host	Rabbit
Reactivity	Human, Mouse, Rat
Applications	ELISA, WB
Immunogen	Synthesized peptide derived from human JDP2 around the non-phosphorylation site of T148.
Immunogen Region	90-170 aa
Gene ID	122953
Gene Symbol	JDP2
Dilution range	WB 1:500-1:2000ELISA 1:10000
Specificity	JDP2 Polyclonal Antibody detects endogenous levels of JDP2 protein.
Purification	The antibody was affinity-purified from rabbit antiserum by affinity-chromatography using epitope-specific immunogen.
Note	For Research Use Only (RUO).
Protein Name	Jun dimerization protein 2
Molecular Weight	22 kDa
Clonality	Polyclonal
Conjugation	Unconjugated

Isotype	IgG
Formulation	Liquid in PBS containing 50% glycerol, 0.5% BSA and 0.02% sodium azide.
Concentration	1 mg/ml
Storage Instruction	Store at -20°C, and avoid repeat freeze-thaw cycles.
Database Links	HGNC:17546 OMIM:608657
Alternative Names	Jun dimerization protein 2
Function	Component of the AP-1 transcription factor that represses transactivation mediated by the Jun family of proteins. Involved in a variety of transcriptional responses associated with AP-1 such as UV-induced apoptosis, cell differentiation, tumorigenesis and antitumogenesis. Can also function as a repressor by recruiting histone deacetylase 3/HDAC3 to the promoter region of JUN. May control transcription via direct regulation of the modification of histones and the assembly of chromatin.
Cellular Localization	Nucleus
Post-translational Modifications	Phosphorylation of Thr-148 by MAPK8 in response to different stress conditions such as, UV irradiation, oxidative stress and anisomycin treatments. Polyubiquitinated; probably by IRF2BP1.