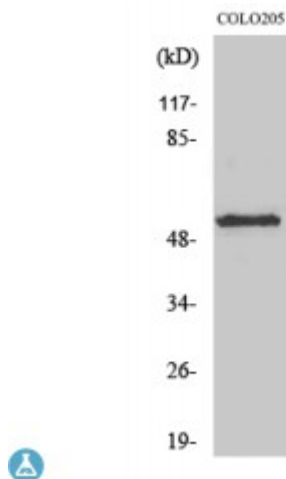


Anti-KCNG2 antibody



Description	Rabbit polyclonal to KCNG2.
Model	STJ93819
Host	Rabbit
Reactivity	Human, Mouse, Rat
Applications	ELISA, WB
Immunogen	Synthesized peptide derived from human KCNG2
Immunogen Region	290-370 aa, Internal
Gene ID	26251
Gene Symbol	KCNG2
Dilution range	WB 1:500-1:2000ELISA 1:5000
Specificity	KCNG2 Polyclonal Antibody detects endogenous levels of KCNG2 protein.
Tissue Specificity	Highly expressed in heart, liver, skeletal muscle, kidney and pancreas. Detected at low levels in brain, lung and placenta.
Purification	The antibody was affinity-purified from rabbit antiserum by affinity-chromatography using epitope-specific immunogen.
Note	For Research Use Only (RUO).
Protein Name	Potassium voltage-gated channel subfamily G member 2 Cardiac potassium channel subunit Voltage-gated potassium channel subunit Kv6.2
Molecular Weight	51 kDa
Clonality	Polyclonal

Conjugation	Unconjugated
Isotype	IgG
Formulation	Liquid in PBS containing 50% glycerol, 0.5% BSA and 0.02% sodium azide.
Concentration	1 mg/ml
Storage Instruction	Store at -20°C, and avoid repeat freeze-thaw cycles.
Database Links	HGNC:6249OMIM:605696
Alternative Names	Potassium voltage-gated channel subfamily G member 2 Cardiac potassium channel subunit Voltage-gated potassium channel subunit Kv6.2
Function	Potassium channel subunit. Modulates channel activity by shifting the threshold and the half-maximal activation to more negative values.
Sequence and Domain Family	The segment S4 is probably the voltage-sensor and is characterized by a series of positively charged amino acids at every third position.
Cellular Localization	Membrane. Multi-pass membrane protein.

St John's Laboratory Ltd

F +44 (0)207 681 2580

T +44 (0)208 223 3081

W <http://www.stjohnslabs.com/>

E info@stjohnslabs.com