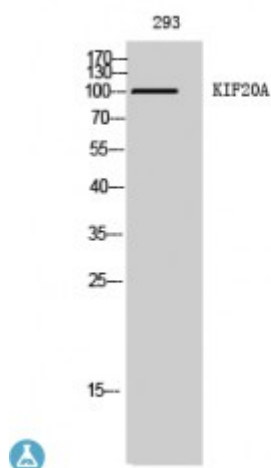


## Anti-KIF20A antibody



<b>Description</b>	Rabbit polyclonal to KIF20A.
<b>Model</b>	STJ93835
<b>Host</b>	Rabbit
<b>Reactivity</b>	Human
<b>Applications</b>	ELISA, IF, IHC, WB
<b>Immunogen</b>	Synthesized peptide derived from human KIF20A around the non-phosphorylation site of S528.
<b>Immunogen Region</b>	470-550 aa
<b>Gene ID</b>	<a href="#">10112</a>
<b>Gene Symbol</b>	<a href="#">KIF20A</a>
<b>Dilution range</b>	WB 1:500-1:2000IHC 1:100-1:300IF 1:200-1:1000ELISA 1:20000
<b>Specificity</b>	KIF20A Polyclonal Antibody detects endogenous levels of KIF20A protein.
<b>Purification</b>	The antibody was affinity-purified from rabbit antiserum by affinity-chromatography using epitope-specific immunogen.
<b>Note</b>	For Research Use Only (RUO).
<b>Protein Name</b>	Kinesin-like protein KIF20A GG10_2 Mitotic kinesin-like protein 2 MKlp2 Rab6-interacting kinesin-like protein Rabkinesin-6
<b>Molecular Weight</b>	100 kDa
<b>Clonality</b>	Polyclonal
<b>Conjugation</b>	Unconjugated

<b>Isotype</b>	IgG
<b>Formulation</b>	Liquid in PBS containing 50% glycerol, 0.5% BSA and 0.02% sodium azide.
<b>Concentration</b>	1 mg/ml
<b>Storage Instruction</b>	Store at -20°C, and avoid repeat freeze-thaw cycles.
<b>Database Links</b>	<a href="https://www.ncbi.nlm.nih.gov/omim/605664">HGNC:9787OMIM:605664</a>
<b>Alternative Names</b>	Kinesin-like protein KIF20A GG10_2 Mitotic kinesin-like protein 2 MKlp2 Rab6-interacting kinesin-like protein Rabkinesin-6
<b>Function</b>	Mitotic kinesin required for chromosome passenger complex (CPC)-mediated cytokinesis. Following phosphorylation by PLK1, involved in recruitment of PLK1 to the central spindle. Interacts with guanosine triphosphate (GTP)-bound forms of RAB6A and RAB6B. May act as a motor required for the retrograde RAB6 regulated transport of Golgi membranes and associated vesicles along microtubules. Has a microtubule plus end-directed motility.
<b>Cellular Localization</b>	Golgi apparatus Cytoplasm, cytoskeleton, spindle
<b>Post-translational Modifications</b>	Phosphorylated by PLK1 at Ser-528 during mitosis, creating a docking site for PLK1 and recruiting PLK1 at central spindle.

---

**St John's Laboratory Ltd**

**F** +44 (0)207 681 2580

**T** +44 (0)208 223 3081

**W** <http://www.stjohnslabs.com/>

**E** [info@stjohnslabs.com](mailto:info@stjohnslabs.com)