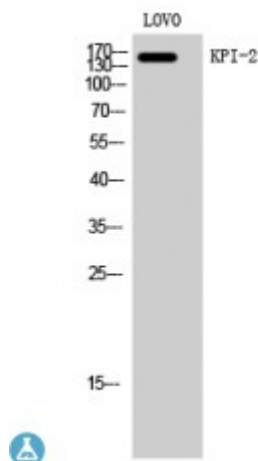


## Anti-KPI-2 antibody



<b>Description</b>	Rabbit polyclonal to KPI-2.
<b>Model</b>	STJ93858
<b>Host</b>	Rabbit
<b>Reactivity</b>	Human
<b>Applications</b>	ELISA, IF, IHC, WB
<b>Immunogen</b>	Synthesized peptide derived from human KPI-2
<b>Immunogen Region</b>	620-700 aa, Internal
<b>Gene ID</b>	<a href="#">22853</a>
<b>Gene Symbol</b>	<a href="#">LMTK2</a>
<b>Dilution range</b>	WB 1:500-1:2000IHC 1:100-1:300IF 1:200-1:1000ELISA 1:20000
<b>Specificity</b>	KPI-2 Polyclonal Antibody detects endogenous levels of KPI-2 protein.
<b>Tissue Specificity</b>	Mainly expressed in skeletal muscle, and weakly in brain and pancreas.
<b>Purification</b>	The antibody was affinity-purified from rabbit antiserum by affinity-chromatography using epitope-specific immunogen.
<b>Note</b>	For Research Use Only (RUO).
<b>Protein Name</b>	Serine/threonine-protein kinase LMTK2 Apoptosis-associated tyrosine kinase 2 Brain-enriched kinase hBREK CDK5/p35-regulated kinase CPRK Kinase/phosphatase/inhibitor 2 Lemur tyrosine kinase 2 Serine/threonine
<b>Molecular Weight</b>	164 kDa
<b>Clonality</b>	Polyclonal

<b>Conjugation</b>	Unconjugated
<b>Isotype</b>	IgG
<b>Formulation</b>	Liquid in PBS containing 50% glycerol, 0.5% BSA and 0.02% sodium azide.
<b>Concentration</b>	1 mg/ml
<b>Storage Instruction</b>	Store at -20°C, and avoid repeat freeze-thaw cycles.
<b>Database Links</b>	<a href="#">HGNC:17880OMIM:610989</a>
<b>Alternative Names</b>	Serine/threonine-protein kinase LMTK2 Apoptosis-associated tyrosine kinase 2 Brain-enriched kinase hBREK CDK5/p35-regulated kinase CPRK Kinase/phosphatase/inhibitor 2 Lemur tyrosine kinase 2 Serine/threonine
<b>Function</b>	Phosphorylates PPP1C, phosphorylase b and CFTR.
<b>Cellular Localization</b>	Membrane
<b>Post-translational Modifications</b>	Autophosphorylated. Phosphorylated .

---

**St John's Laboratory Ltd**

**F** +44 (0)207 681 2580

**T** +44 (0)208 223 3081

**W** <http://www.stjohnslabs.com/>

**E** [info@stjohnslabs.com](mailto:info@stjohnslabs.com)