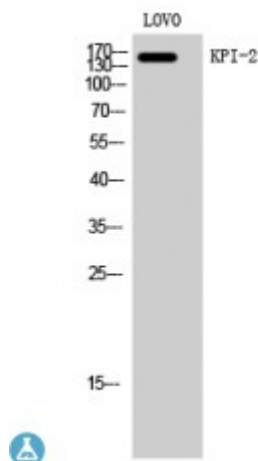


Anti-KPI-2 antibody



Description	Rabbit polyclonal to KPI-2.
Model	STJ93858
Host	Rabbit
Reactivity	Human
Applications	ELISA, IF, IHC, WB
Immunogen	Synthesized peptide derived from human KPI-2
Immunogen Region	620-700 aa, Internal
Gene ID	22853
Gene Symbol	LMTK2
Dilution range	WB 1:500-1:2000IHC 1:100-1:300IF 1:200-1:1000ELISA 1:20000
Specificity	KPI-2 Polyclonal Antibody detects endogenous levels of KPI-2 protein.
Tissue Specificity	Mainly expressed in skeletal muscle, and weakly in brain and pancreas.
Purification	The antibody was affinity-purified from rabbit antiserum by affinity-chromatography using epitope-specific immunogen.
Note	For Research Use Only (RUO).
Protein Name	Serine/threonine-protein kinase LMTK2 Apoptosis-associated tyrosine kinase 2 Brain-enriched kinase hBREK CDK5/p35-regulated kinase CPRK Kinase/phosphatase/inhibitor 2 Lemur tyrosine kinase 2 Serine/threonine
Molecular Weight	164 kDa
Clonality	Polyclonal

Conjugation	Unconjugated
Isotype	IgG
Formulation	Liquid in PBS containing 50% glycerol, 0.5% BSA and 0.02% sodium azide.
Concentration	1 mg/ml
Storage Instruction	Store at -20°C, and avoid repeat freeze-thaw cycles.
Database Links	HGNC:17880OMIM:610989
Alternative Names	Serine/threonine-protein kinase LMTK2 Apoptosis-associated tyrosine kinase 2 Brain-enriched kinase hBREK CDK5/p35-regulated kinase CPRK Kinase/phosphatase/inhibitor 2 Lemur tyrosine kinase 2 Serine/threonine
Function	Phosphorylates PPP1C, phosphorylase b and CFTR.
Cellular Localization	Membrane
Post-translational Modifications	Autophosphorylated. Phosphorylated .

St John's Laboratory Ltd

F +44 (0)207 681 2580

T +44 (0)208 223 3081

W <http://www.stjohnslabs.com/>

E info@stjohnslabs.com