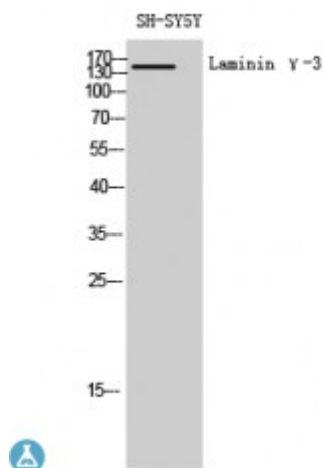


Anti-Laminin gamma-3 antibody



Description	Rabbit polyclonal to Laminin gamma-3.
Model	STJ93897
Host	Rabbit
Reactivity	Human, Mouse
Applications	ELISA, IF, IHC, WB
Immunogen	Synthesized peptide derived from human Laminin gamma-3
Immunogen Region	1330-1410 aa, C-terminal
Gene ID	10319
Gene Symbol	LAMC3
Dilution range	WB 1:500-1:2000IHC 1:100-1:300IF 1:200-1:1000ELISA 1:40000
Specificity	Laminin gamma-3 Polyclonal Antibody detects endogenous levels of Laminin gamma-3 protein.
Tissue Specificity	Broadly expressed in: skin, heart, lung, and the reproductive tracts.
Purification	The antibody was affinity-purified from rabbit antiserum by affinity-chromatography using epitope-specific immunogen.
Note	For Research Use Only (RUO).
Protein Name	Laminin subunit gamma-3 Laminin-12 subunit gamma Laminin-14 subunit gamma Laminin-15 subunit gamma
Molecular Weight	170 kDa
Clonality	Polyclonal

Conjugation	Unconjugated
Isotype	IgG
Formulation	Liquid in PBS containing 50% glycerol, 0.5% BSA and 0.02% sodium azide.
Concentration	1 mg/ml
Storage Instruction	Store at -20°C, and avoid repeat freeze-thaw cycles.
Database Links	HGNC:6494OMIM:604349
Alternative Names	Laminin subunit gamma-3 Laminin-12 subunit gamma Laminin-14 subunit gamma Laminin-15 subunit gamma
Function	Binding to cells via a high affinity receptor, laminin is thought to mediate the attachment, migration and organization of cells into tissues during embryonic development by interacting with other extracellular matrix components.
Sequence and Domain Family	The alpha-helical domains I and II are thought to interact with other laminin chains to form a coiled coil structure.; Domain IV is globular.
Cellular Localization	Secreted, extracellular space, extracellular matrix, basement membrane.

St John's Laboratory Ltd

F +44 (0)207 681 2580

T +44 (0)208 223 3081

W <http://www.stjohnslabs.com/>

E info@stjohnslabs.com