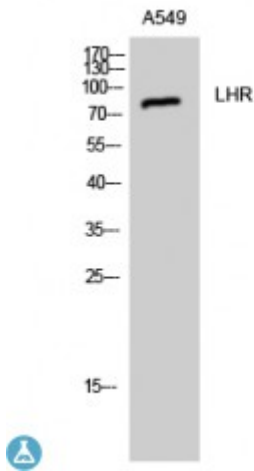


Anti-LHR antibody



Description	Rabbit polyclonal to LHR.
Model	STJ93923
Host	Rabbit
Reactivity	Human, Mouse, Rat
Applications	ELISA, IF, WB
Immunogen	Synthesized peptide derived from human LHR
Immunogen Region	590-670 aa, C-terminal
Gene ID	3973
Gene Symbol	LHCGR
Dilution range	WB 1:500-1:2000IF 1:200-1:1000ELISA 1:10000
Specificity	LHR Polyclonal Antibody detects endogenous levels of LHR protein.
Tissue Specificity	Gonadal and thyroid cells.
Purification	The antibody was affinity-purified from rabbit antiserum by affinity-chromatography using epitope-specific immunogen.
Note	For Research Use Only (RUO).
Protein Name	Lutropin-choriogonadotropic hormone receptor LH/CG-R Luteinizing hormone receptor LHR LSH-R
Molecular Weight	80 kDa
Clonality	Polyclonal

Conjugation	Unconjugated
Isotype	IgG
Formulation	Liquid in PBS containing 50% glycerol, 0.5% BSA and 0.02% sodium azide.
Concentration	1 mg/ml
Storage Instruction	Store at -20°C, and avoid repeat freeze-thaw cycles.
Database Links	HGNC:6585OMIM:152790
Alternative Names	Lutropin-choriogonadotropic hormone receptor LH/CG-R Luteinizing hormone receptor LHR LSH-R
Function	Receptor for lutropin-choriogonadotropic hormone . The activity of this receptor is mediated by G proteins which activate adenylate cyclase .
Cellular Localization	Cell membrane
Post-translational Modifications	Sulfated.

St John's Laboratory Ltd

F +44 (0)207 681 2580

T +44 (0)208 223 3081

W <http://www.stjohnslabs.com/>

E info@stjohnslabs.com