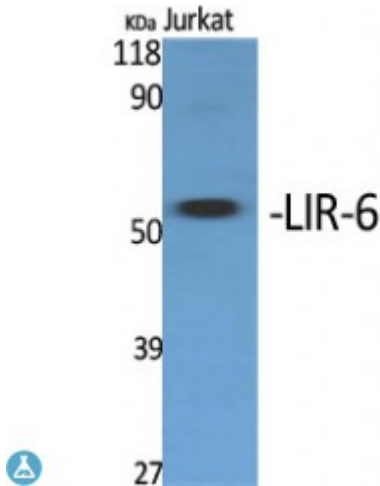


Anti-LIR-6 antibody



Description	Rabbit polyclonal to LIR-6.
Model	STJ93934
Host	Rabbit
Reactivity	Human
Applications	ELISA, IF, WB
Immunogen	Synthesized peptide derived from human LIR-6
Immunogen Region	30-110 aa, Internal
Gene ID	11024
Gene Symbol	LILRA1
Dilution range	WB 1:500-1:2000IF 1:200-1:1000ELISA 1:20000
Specificity	LIR-6 Polyclonal Antibody detects endogenous levels of LIR-6 protein.
Tissue Specificity	Detected in monocytes and B-cells.
Purification	The antibody was affinity-purified from rabbit antiserum by affinity-chromatography using epitope-specific immunogen.
Note	For Research Use Only (RUO).
Protein Name	Leukocyte immunoglobulin-like receptor subfamily A member 1 CD85 antigen-like family member I Leukocyte immunoglobulin-like receptor 6 LIR-6 CD antigen CD85i
Molecular Weight	53 kDa
Clonality	Polyclonal

Conjugation	Unconjugated
Isotype	IgG
Formulation	Liquid in PBS containing 50% glycerol, 0.5% BSA and 0.02% sodium azide.
Concentration	1 mg/ml
Storage Instruction	Store at -20°C, and avoid repeat freeze-thaw cycles.
Database Links	HGNC:6602OMIM:604810
Alternative Names	Leukocyte immunoglobulin-like receptor subfamily A member 1 CD85 antigen-like family member I Leukocyte immunoglobulin-like receptor 6 LIR-6 CD antigen CD85i
Function	May act as receptor for class I MHC antigens.
Cellular Localization	Membrane. Single-pass type I membrane protein.

St John's Laboratory Ltd

F +44 (0)207 681 2580

T +44 (0)208 223 3081

W <http://www.stjohnslabs.com/>

E info@stjohnslabs.com