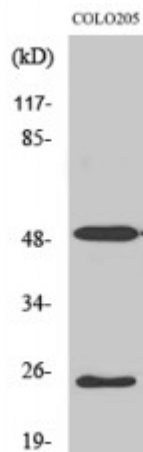


Anti-LRAT antibody



Description	Rabbit polyclonal to LRAT.
Model	STJ93952
Host	Rabbit
Reactivity	Human, Mouse, Rat
Applications	ELISA, IF, IHC, WB
Immunogen	Synthesized peptide derived from human LRAT
Immunogen Region	80-160 aa, Internal
Gene ID	9227
Gene Symbol	LRAT
Dilution range	WB 1:500-1:2000IHC 1:100-1:300IF 1:200-1:1000ELISA 1:10000
Specificity	LRAT Polyclonal Antibody detects endogenous levels of LRAT protein.
Tissue Specificity	Hepatic stellate cells and endothelial cells (at protein level). Found at high levels in testis and liver, followed by retinal pigment epithelium, small intestine, prostate, pancreas and colon. Low expression observed in brain. In fetal tissues, expressed in retinal pigment epithelium and liver, and barely in the brain.
Purification	The antibody was affinity-purified from rabbit antiserum by affinity-chromatography using epitope-specific immunogen.
Note	For Research Use Only (RUO).
Protein Name	Lecithin retinol acyltransferase Phosphatidylcholine--retinol O-acyltransferase

Molecular Weight	27 kDa
Clonality	Polyclonal
Conjugation	Unconjugated
Isotype	IgG
Formulation	Liquid in PBS containing 50% glycerol, 0.5% BSA and 0.02% sodium azide.
Concentration	1 mg/ml
Storage Instruction	Store at -20°C, and avoid repeat freeze-thaw cycles.
Database Links	HGNC:6685OMIM:604863
Alternative Names	Lecithin retinol acyltransferase Phosphatidylcholine--retinol O-acyltransferase
Function	Transfers the acyl group from the sn-1 position of phosphatidylcholine to all-trans retinol, producing all-trans retinyl esters. Retinyl esters are storage forms of vitamin A. LRAT plays a critical role in vision. It provides the all-trans retinyl ester substrates for the isomerohydrolase which processes the esters into 11-cis-retinol in the retinal pigment epithelium; due to a membrane-associated alcohol dehydrogenase, 11 cis-retinol is oxidized and converted into 11-cis-retinaldehyde which is the chromophore for rhodopsin and the cone photopigments.
Cellular Localization	Endoplasmic reticulum membrane Rough endoplasmic reticulum Endosome, multivesicular body Cytoplasm, perinuclear region. Present in the rough endoplasmic reticulum and multivesicular body in hepatic stellate cells. Present in the rough endoplasmic reticulum and perinuclear region in endothelial cells .