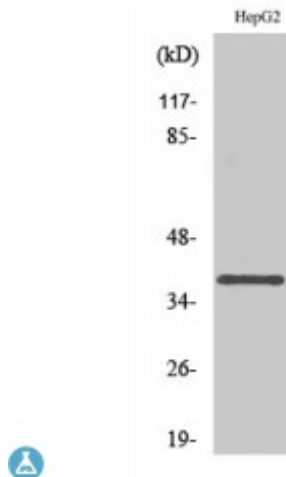


Anti-L-type Ca⁺⁺ CP gamma antibody



Description	Rabbit polyclonal to L-type Ca ⁺⁺ CP gamma7.
Model	STJ93965
Host	Rabbit
Reactivity	Human, Mouse, Rat
Applications	ELISA, WB
Immunogen	Synthesized peptide derived from human L-type Ca ⁺⁺ CP gamma7
Immunogen Region	170-250 aa, C-terminal
Gene ID	59284
Gene Symbol	CACNG7
Dilution range	WB 1:500-1:2000ELISA 1:20000
Specificity	L-type Ca ⁺⁺ CP gamma7 Polyclonal Antibody detects endogenous levels of L-type Ca ⁺⁺ CP gamma7 protein.
Tissue Specificity	Widely expressed.
Purification	The antibody was affinity-purified from rabbit antiserum by affinity-chromatography using epitope-specific immunogen.
Note	For Research Use Only (RUO).
Protein Name	Voltage-dependent calcium channel gamma-7 subunit Neuronal voltage-gated calcium channel gamma-7 subunit Transmembrane AMPAR regulatory protein gamma-7 TARP gamma-7
Molecular Weight	40 kDa

Clonality	Polyclonal
Conjugation	Unconjugated
Isotype	IgG
Formulation	Liquid in PBS containing 50% glycerol, 0.5% BSA and 0.02% sodium azide.
Concentration	1 mg/ml
Storage Instruction	Store at -20°C, and avoid repeat freeze-thaw cycles.
Database Links	HGNC:13626OMIM:606899
Alternative Names	Voltage-dependent calcium channel gamma-7 subunit Neuronal voltage-gated calcium channel gamma-7 subunit Transmembrane AMPAR regulatory protein gamma-7 TARP gamma-7
Function	Regulates the trafficking and gating properties of AMPA-selective glutamate receptors (AMPA receptors). Promotes their targeting to the cell membrane and synapses and modulates their gating properties by slowing their rates of activation, deactivation and desensitization and by mediating their resensitization. Displays subunit-specific AMPA receptor regulation. Shows specificity only for GRIA1 and GRIA2. Thought to stabilize the calcium channel in an inactivated (closed) state.
Cellular Localization	Membrane

St John's Laboratory Ltd

F +44 (0)207 681 2580
T +44 (0)208 223 3081

W <http://www.stjohnslabs.com/>
E info@stjohnslabs.com