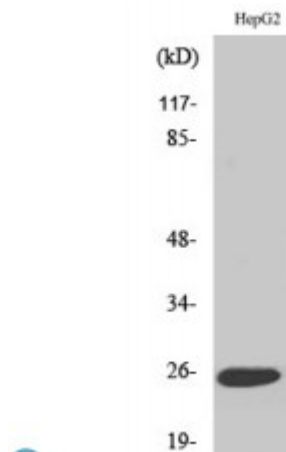


Anti-LT-beta antibody



Description	Rabbit polyclonal to LT-beta.
Model	STJ93966
Host	Rabbit
Reactivity	Human, Mouse
Applications	ELISA, IF, WB
Immunogen	Synthesized peptide derived from human LT-beta
Immunogen Region	150-230 aa, C-terminal
Gene ID	4050
Gene Symbol	LTB
Dilution range	WB 1:500-1:2000IF 1:200-1:1000ELISA 1:10000
Specificity	LT-beta Polyclonal Antibody detects endogenous levels of LT-beta protein.
Tissue Specificity	Spleen and thymus.
Purification	The antibody was affinity-purified from rabbit antiserum by affinity-chromatography using epitope-specific immunogen.
Note	For Research Use Only (RUO).
Protein Name	Lymphotoxin-beta LT-beta Tumor necrosis factor C TNF-C Tumor necrosis factor ligand superfamily member 3
Molecular Weight	22 kDa
Clonality	Polyclonal

Conjugation	Unconjugated
Isotype	IgG
Formulation	Liquid in PBS containing 50% glycerol, 0.5% BSA and 0.02% sodium azide.
Concentration	1 mg/ml
Storage Instruction	Store at -20°C, and avoid repeat freeze-thaw cycles.
Database Links	HGNC:6711OMIM:600978
Alternative Names	Lymphotoxin-beta LT-beta Tumor necrosis factor C TNF-C Tumor necrosis factor ligand superfamily member 3
Function	Cytokine that binds to LTBR/TNFRSF3. May play a specific role in immune response regulation. Provides the membrane anchor for the attachment of the heterotrimeric complex to the cell surface. Isoform 2 is probably non-functional.
Cellular Localization	Membrane

St John's Laboratory Ltd

F +44 (0)207 681 2580

T +44 (0)208 223 3081

W <http://www.stjohnslabs.com/>

E info@stjohnslabs.com