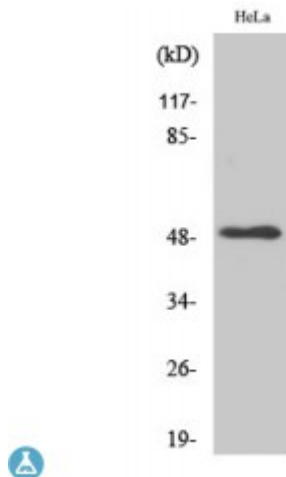


Anti-L beta antibody



Description	Rabbit polyclonal to LTbetaR.
Model	STJ93967
Host	Rabbit
Reactivity	Human, Mouse
Applications	ELISA, IF, WB
Immunogen	Synthesized peptide derived from human LTbetaR
Immunogen Region	30-110 aa, N-terminal
Gene ID	4055
Gene Symbol	LTBR
Dilution range	WB 1:500-1:2000IF 1:200-1:1000ELISA 1:40000
Specificity	LTbetaR Polyclonal Antibody detects endogenous levels of LTbetaR protein.
Purification	The antibody was affinity-purified from rabbit antiserum by affinity-chromatography using epitope-specific immunogen.
Note	For Research Use Only (RUO).
Protein Name	Tumor necrosis factor receptor superfamily member 3 Lymphotoxin-beta receptor Tumor necrosis factor C receptor Tumor necrosis factor receptor 2-related protein Tumor necrosis factor receptor type III TNF-RIII TNFR-III
Molecular Weight	50 kDa
Clonality	Polyclonal
Conjugation	Unconjugated

Isotype	IgG
Formulation	Liquid in PBS containing 50% glycerol, 0.5% BSA and 0.02% sodium azide.
Concentration	1 mg/ml
Storage Instruction	Store at -20°C, and avoid repeat freeze-thaw cycles.
Database Links	HGNC:6718 OMIM:600979
Alternative Names	Tumor necrosis factor receptor superfamily member 3 Lymphotoxin-beta receptor Tumor necrosis factor C receptor Tumor necrosis factor receptor 2-related protein Tumor necrosis factor receptor type III TNF-RIII TNFR-III
Function	Receptor for the heterotrimeric lymphotoxin containing LTA and LTB, and for TNFS14/LIGHT. Promotes apoptosis via TRAF3 and TRAF5. May play a role in the development of lymphoid organs.
Cellular Localization	Membrane. Single-pass type I membrane protein.

St John's Laboratory Ltd

F +44 (0)207 681 2580

T +44 (0)208 223 3081

W <http://www.stjohnslabs.com/>

E info@stjohnslabs.com