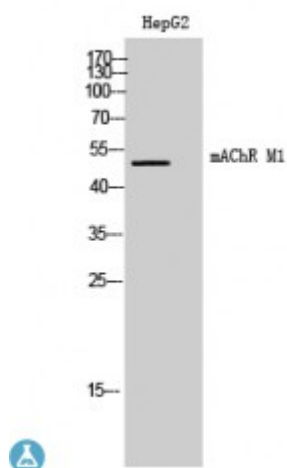


Anti-mAChR M1 antibody



Description	Rabbit polyclonal to mAChR M1.
Model	STJ93976
Host	Rabbit
Reactivity	Human, Mouse, Rat
Applications	ELISA, WB
Immunogen	Synthesized peptide derived from human mAChR M1
Immunogen Region	270-350 aa, Internal
Gene ID	1128
Gene Symbol	CHRM1
Dilution range	WB 1:500-1:2000ELISA 1:5000
Specificity	mAChR M1 Polyclonal Antibody detects endogenous levels of mAChR M1 protein.
Purification	The antibody was affinity-purified from rabbit antiserum by affinity-chromatography using epitope-specific immunogen.
Note	For Research Use Only (RUO).
Protein Name	Muscarinic acetylcholine receptor M1
Molecular Weight	48 kDa
Clonality	Polyclonal
Conjugation	Unconjugated

Isotype	IgG
Formulation	Liquid in PBS containing 50% glycerol, 0.5% BSA and 0.02% sodium azide.
Concentration	1 mg/ml
Storage Instruction	Store at -20°C, and avoid repeat freeze-thaw cycles.
Database Links	HGNC:1950OMIM:118510
Alternative Names	Muscarinic acetylcholine receptor M1
Function	The muscarinic acetylcholine receptor mediates various cellular responses, including inhibition of adenylate cyclase, breakdown of phosphoinositides and modulation of potassium channels through the action of G proteins. Primary transducing effect is Pi turnover.
Cellular Localization	Cell membrane. Multi-pass membrane protein. Cell junction, synapse, postsynaptic cell membrane. Multi-pass membrane protein.

St John's Laboratory Ltd

F +44 (0)207 681 2580

T +44 (0)208 223 3081

W <http://www.stjohnslabs.com/>

E info@stjohnslabs.com