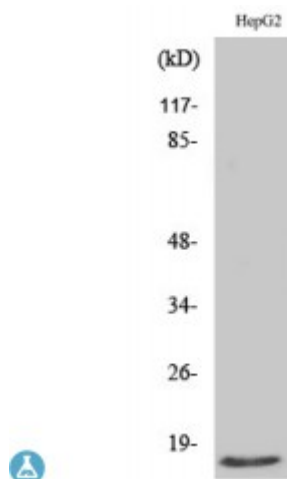


Anti-Mammaglobin B antibody



Description	Rabbit polyclonal to Mammaglobin B.
Model	STJ93997
Host	Rabbit
Reactivity	Human
Applications	ELISA, IF, IHC, WB
Immunogen	Synthesized peptide derived from human Mammaglobin B
Immunogen Region	10-90 aa, N-terminal
Gene ID	4246
Gene Symbol	SCGB2A1
Dilution range	WB 1:500-1:2000IHC 1:100-1:300IF 1:200-1:1000ELISA 1:20000
Specificity	Mammaglobin B Polyclonal Antibody detects endogenous levels of Mammaglobin B protein.
Tissue Specificity	Expressed in thymus, trachea, kidney, steroid responsive tissues (prostate, testis, uterus, breast and ovary) and salivary gland.
Purification	The antibody was affinity-purified from rabbit antiserum by affinity-chromatography using epitope-specific immunogen.
Note	For Research Use Only (RUO).
Protein Name	Mammaglobin-B Lacryglobin Lipophilin-C Mammaglobin-2 Secretoglobin family 2A member 1
Molecular Weight	15 kDa

Clonality	Polyclonal
Conjugation	Unconjugated
Isotype	IgG
Formulation	Liquid in PBS containing 50% glycerol, 0.5% BSA and 0.02% sodium azide.
Concentration	1 mg/ml
Storage Instruction	Store at -20°C, and avoid repeat freeze-thaw cycles.
Database Links	HGNC:7051OMIM:604398
Alternative Names	Mammaglobin-B Lacryglobin Lipophilin-C Mammaglobin-2 Secretoglobulin family 2A member 1
Function	May bind androgens and other steroids, may also bind estramustine, a chemotherapeutic agent used for prostate cancer. May be under transcriptional regulation of steroid hormones.

St John's Laboratory Ltd

F +44 (0)207 681 2580

T +44 (0)208 223 3081

W <http://www.stjohnslabs.com/>

E info@stjohnslabs.com