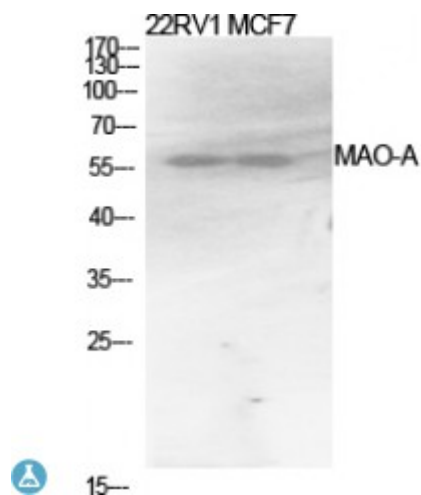


Anti-MAO-A antibody



Description	Rabbit polyclonal to MAO-A.
Model	STJ94000
Host	Rabbit
Reactivity	Human, Mouse, Rat
Applications	ELISA, IHC, WB
Immunogen	Synthesized peptide derived from human MAO-A.
Immunogen Region	Internal
Gene ID	4128
Gene Symbol	MAOA
Dilution range	WB 1:500-1:2000IHC 1:100-1:300ELISA 1:20000
Specificity	MAO-A Polyclonal Antibody detects endogenous levels of MAO-A protein.
Tissue Specificity	Heart, liver, duodenum, blood vessels and kidney.
Purification	The antibody was affinity-purified from rabbit antiserum by affinity-chromatography using epitope-specific immunogen.
Note	For Research Use Only (RUO).
Protein Name	Amine oxidase flavin-containing A Monoamine oxidase type A MAO-A
Molecular Weight	61 kDa
Clonality	Polyclonal
Conjugation	Unconjugated

Isotype	IgG
Formulation	Liquid in PBS containing 50% glycerol, 0.5% BSA and 0.02% sodium azide.
Concentration	1 mg/ml
Storage Instruction	Store at -20°C, and avoid repeat freeze-thaw cycles.
Database Links	HGNC:6833OMIM:300615
Alternative Names	Amine oxidase flavin-containing A Monoamine oxidase type A MAO-A
Function	Catalyzes the oxidative deamination of biogenic and xenobiotic amines and has important functions in the metabolism of neuroactive and vasoactive amines in the central nervous system and peripheral tissues. MAOA preferentially oxidizes biogenic amines such as 5-hydroxytryptamine (5-HT), norepinephrine and epinephrine.
Cellular Localization	Mitochondrion outer membrane. Single-pass type IV membrane protein. Cytoplasmic side.

St John's Laboratory Ltd

F +44 (0)207 681 2580

T +44 (0)208 223 3081

W <http://www.stjohnslabs.com/>

E info@stjohnslabs.com