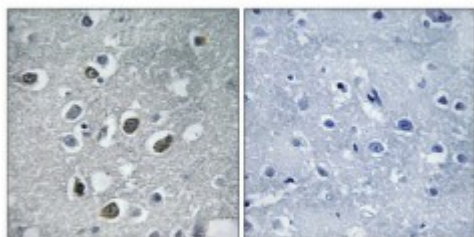


Anti-MARCH3 antibody



Description	Rabbit polyclonal to MARCH3.
Model	STJ94010
Host	Rabbit
Reactivity	Human, Mouse
Applications	ELISA, IHC
Immunogen	Synthesized peptide derived from human 40606
Immunogen Region	270-350 aa, C-terminal
Gene ID	57574
Gene Symbol	38047
Dilution range	IHC 1:100-1:300ELISA 1:40000
Specificity	MARCH4 Polyclonal Antibody detects endogenous levels of 40606 protein.
Tissue Specificity	Expressed in brain and placenta.
Purification	The antibody was affinity-purified from rabbit antiserum by affinity-chromatography using epitope-specific immunogen.
Note	For Research Use Only (RUO).
Protein Name	E3 ubiquitin-protein ligase MARCH4 Membrane-associated RING finger protein 4 Membrane-associated RING-CH protein IV MARCH-IV RING finger protein 174 RING-type E3 ubiquitin transferase MARCH4
Molecular Weight	45.528 kDa
Clonality	Polyclonal

Conjugation	Unconjugated
Isotype	IgG
Formulation	Liquid in PBS containing 50% glycerol, 0.5% BSA and 0.02% sodium azide.
Concentration	1 mg/ml
Storage Instruction	Store at -20°C, and avoid repeat freeze-thaw cycles.
Database Links	HGNC:29269OMIM:608208
Alternative Names	E3 ubiquitin-protein ligase MARCH4 Membrane-associated RING finger protein 4 Membrane-associated RING-CH protein IV MARCH-IV RING finger protein 174 RING-type E3 ubiquitin transferase MARCH4
Function	E3 ubiquitin-protein ligase that may mediate ubiquitination of MHC-I and CD4, and promote their subsequent endocytosis and sorting to lysosomes via multivesicular bodies. E3 ubiquitin ligases accept ubiquitin from an E2 ubiquitin-conjugating enzyme in the form of a thioester and then directly transfer the ubiquitin to targeted substrates.
Sequence and Domain Family	The RING-CH-type zinc finger domain is required for E3 ligase activity.
Cellular Localization	Golgi apparatus membrane