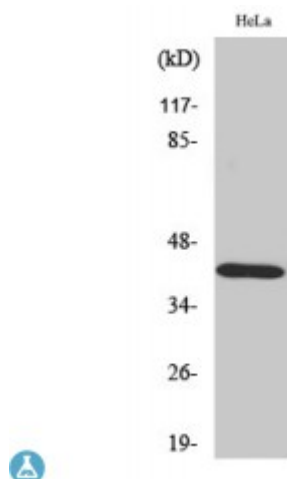


Anti-Maspin antibody



Description	Rabbit polyclonal to Maspin.
Model	STJ94022
Host	Rabbit
Reactivity	Human, Mouse, Rat
Applications	ELISA, IF, IHC, WB
Immunogen	Synthesized peptide derived from human Maspin
Immunogen Region	60-140 aa, Internal
Gene ID	5268
Gene Symbol	SERPINB5
Dilution range	WB 1:500-1:2000IHC 1:100-1:300IF 1:200-1:1000ELISA 1:20000
Specificity	Maspin Polyclonal Antibody detects endogenous levels of Maspin protein.
Tissue Specificity	Normal mammary epithelial cells.
Purification	The antibody was affinity-purified from rabbit antiserum by affinity-chromatography using epitope-specific immunogen.
Note	For Research Use Only (RUO).
Protein Name	Serpin B5 Maspin Peptidase inhibitor 5 PI-5
Molecular Weight	40 kDa
Clonality	Polyclonal
Conjugation	Unconjugated

Isotype	IgG
Formulation	Liquid in PBS containing 50% glycerol, 0.5% BSA and 0.02% sodium azide.
Concentration	1 mg/ml
Storage Instruction	Store at -20°C, and avoid repeat freeze-thaw cycles.
Database Links	HGNC:8949OMIM:154790
Alternative Names	Serpin B5 Maspin Peptidase inhibitor 5 PI-5
Function	Tumor suppressor. It blocks the growth, invasion, and metastatic properties of mammary tumors. As it does not undergo the S (stressed) to R (relaxed) conformational transition characteristic of active serpins, it exhibits no serine protease inhibitory activity.
Cellular Localization	Secreted, extracellular space.

St John's Laboratory Ltd

F +44 (0)207 681 2580

T +44 (0)208 223 3081

W <http://www.stjohnslabs.com/>

E info@stjohnslabs.com