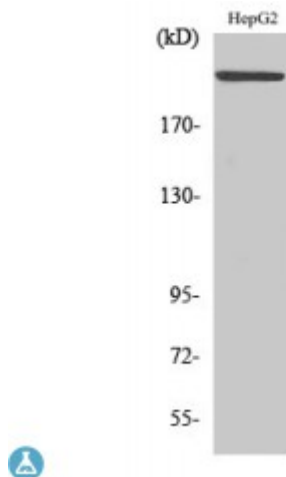


Anti-MAST205 antibody



Description	Rabbit polyclonal to MAST205.
Model	STJ94023
Host	Rabbit
Reactivity	Human, Mouse
Applications	ELISA, IF, IHC, WB
Immunogen	Synthesized peptide derived from human MAST205
Immunogen Region	1170-1250 aa, Internal
Gene ID	23139
Gene Symbol	MAST2
Dilution range	WB 1:500-1:2000IHC 1:100-1:300IF 1:200-1:1000ELISA 1:40000
Specificity	MAST205 Polyclonal Antibody detects endogenous levels of MAST205 protein.
Tissue Specificity	Abundant in the testis.
Purification	The antibody was affinity-purified from rabbit antiserum by affinity-chromatography using epitope-specific immunogen.
Note	For Research Use Only (RUO).
Protein Name	Microtubule-associated serine/threonine-protein kinase 2
Molecular Weight	196 kDa
Clonality	Polyclonal

Conjugation	Unconjugated
Isotype	IgG
Formulation	Liquid in PBS containing 50% glycerol, 0.5% BSA and 0.02% sodium azide.
Concentration	1 mg/ml
Storage Instruction	Store at -20°C, and avoid repeat freeze-thaw cycles.
Database Links	HGNC:19035OMIM:612257
Alternative Names	Microtubule-associated serine/threonine-protein kinase 2
Function	Appears to link the dystrophin/utrophin network with microtubule filaments via the syntrophins. Phosphorylation of DMD or UTRN may modulate their affinities for associated proteins. Functions in a multi-protein complex in spermatid maturation. Regulates lipopolysaccharide-induced IL-12 synthesis in macrophages by forming a complex with TRAF6, resulting in the inhibition of TRAF6 NF-kappa-B activation .
Cellular Localization	Cytoplasm, cytoskeleton Cell membrane. Recruited to the sub-membranous area on interaction with CDHR2.
Post-translational Modifications	Phosphorylated and ubiquitinated. N-terminal ubiquitination leads to degradation of MAST2 by proteasome-mediated proteolysis. N-terminal phosphorylation appears to be a prerequisite for ubiquitination .

St John's Laboratory Ltd

F +44 (0)207 681 2580
T +44 (0)208 223 3081

W <http://www.stjohnslabs.com/>
E info@stjohnslabs.com