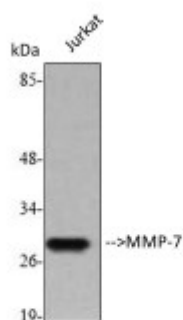


Anti-MMP-7 antibody



Description	Rabbit polyclonal to MMP-7.
Model	STJ94028
Host	Rabbit
Reactivity	Human, Mouse, Rat, Simian
Applications	ELISA, IHC, WB
Immunogen	Synthesized peptide derived from human MMP-7
Immunogen Region	190-270 aa, C-terminal
Gene ID	4316
Gene Symbol	MMP7
Dilution range	WB 1:500-1:2000IHC 1:100-1:300ELISA 1:40000
Specificity	MMP-7 Polyclonal Antibody detects endogenous levels of MMP-7 protein.
Purification	The antibody was affinity-purified from rabbit antiserum by affinity-chromatography using epitope-specific immunogen.
Note	For Research Use Only (RUO).
Protein Name	Matrilysin Matrin Matrix metalloproteinase-7 MMP-7 Pump-1 protease Uterine metalloproteinase
Molecular Weight	30 kDa
Clonality	Polyclonal
Conjugation	Unconjugated

Isotype	IgG
Formulation	Liquid in PBS containing 50% glycerol, 0.5% BSA and 0.02% sodium azide.
Concentration	1 mg/ml
Storage Instruction	Store at -20°C, and avoid repeat freeze-thaw cycles.
Database Links	HGNC:7174OMIM:178990
Alternative Names	Matrilysin Matrin Matrix metalloproteinase-7 MMP-7 Pump-1 protease Uterine metalloproteinase
Function	Degrades casein, gelatins of types I, III, IV, and V, and fibronectin. Activates procollagenase.
Sequence and Domain Family	The conserved cysteine present in the cysteine-switch motif binds the catalytic zinc ion, thus inhibiting the enzyme. The dissociation of the cysteine from the zinc ion upon the activation-peptide release activates the enzyme.
Cellular Localization	Secreted, extracellular space, extracellular matrix

St John's Laboratory Ltd

F +44 (0)207 681 2580

T +44 (0)208 223 3081

W <http://www.stjohnslabs.com/>

E info@stjohnslabs.com