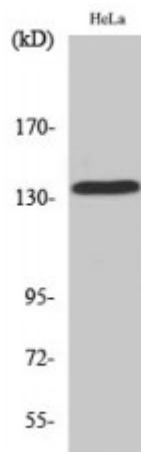


## Anti-Maxi alpha antibody



<b>Description</b>	Rabbit polyclonal to MaxiKalpha.
<b>Model</b>	STJ94031
<b>Host</b>	Rabbit
<b>Reactivity</b>	Human, Mouse, Rat
<b>Applications</b>	ELISA, IHC, WB
<b>Immunogen</b>	Synthesized peptide derived from human MaxiKalpha.
<b>Immunogen Region</b>	Internal
<b>Gene ID</b>	<a href="#">3778</a>
<b>Gene Symbol</b>	<a href="#">KCNMA1</a>
<b>Dilution range</b>	WB 1:500-1:2000IHC 1:100-1:300ELISA 1:40000
<b>Specificity</b>	MaxiKalpha Polyclonal Antibody detects endogenous levels of MaxiKalpha protein.
<b>Tissue Specificity</b>	Widely expressed. Except in myocytes, it is almost ubiquitously expressed.
<b>Purification</b>	The antibody was affinity-purified from rabbit antiserum by affinity-chromatography using epitope-specific immunogen.
<b>Note</b>	For Research Use Only (RUO).
<b>Protein Name</b>	Calcium-activated potassium channel subunit alpha-1 BK channel BKCA alpha Calcium-activated potassium channel, subfamily M subunit alpha-1 K VCAalpha KCa1.1 Maxi K channel MaxiK Slo-alpha Slo1