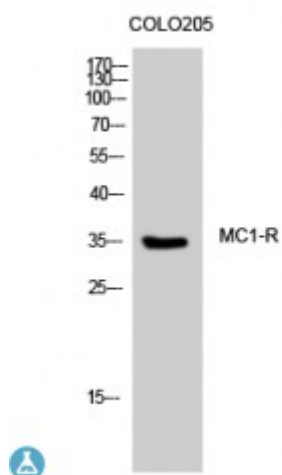


Anti-MC1-R antibody



Description	Rabbit polyclonal to MC1-R.
Model	STJ94038
Host	Rabbit
Reactivity	Human
Applications	ELISA, IF, WB
Immunogen	Synthesized peptide derived from human MC1-R
Immunogen Region	240-320 aa, C-terminal
Gene ID	4157
Gene Symbol	MC1R
Dilution range	WB 1:500-1:2000IF 1:200-1:1000ELISA 1:5000
Specificity	MC1-R Polyclonal Antibody detects endogenous levels of MC1-R protein.
Tissue Specificity	Melanocytes and corticoadrenal tissue.
Purification	The antibody was affinity-purified from rabbit antiserum by affinity-chromatography using epitope-specific immunogen.
Note	For Research Use Only (RUO).
Protein Name	Melanocyte-stimulating hormone receptor MSH-R Melanocortin receptor 1 MC1-R
Molecular Weight	35 kDa
Clonality	Polyclonal

Conjugation	Unconjugated
Isotype	IgG
Formulation	Liquid in PBS containing 50% glycerol, 0.5% BSA and 0.02% sodium azide.
Concentration	1 mg/ml
Storage Instruction	Store at -20°C, and avoid repeat freeze-thaw cycles.
Database Links	HGNC:6929OMIM:155555
Alternative Names	Melanocyte-stimulating hormone receptor MSH-R Melanocortin receptor 1 MC1-R
Function	Receptor for MSH (alpha, beta and gamma) and ACTH. The activity of this receptor is mediated by G proteins which activate adenylate cyclase.
Cellular Localization	Cell membrane. Multi-pass membrane protein.

St John's Laboratory Ltd

F +44 (0)207 681 2580

T +44 (0)208 223 3081

W <http://www.stjohnslabs.com/>

E info@stjohnslabs.com