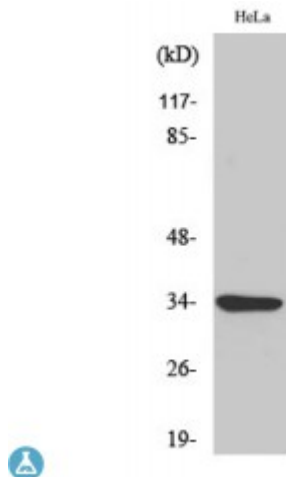


Anti-MC2-R antibody



Description	Rabbit polyclonal to MC2-R.
Model	STJ94039
Host	Rabbit
Reactivity	Human, Mouse
Applications	ELISA, IF, WB
Immunogen	Synthesized peptide derived from human MC2-R
Immunogen Region	220-300 aa, C-terminal
Gene ID	4158
Gene Symbol	MC2R
Dilution range	WB 1:500-1:2000IF 1:200-1:1000ELISA 1:20000
Specificity	MC2-R Polyclonal Antibody detects endogenous levels of MC2-R protein.
Tissue Specificity	Melanocytes and corticoadrenal tissue.
Purification	The antibody was affinity-purified from rabbit antiserum by affinity-chromatography using epitope-specific immunogen.
Note	For Research Use Only (RUO).
Protein Name	Adrenocorticotrop hormone receptor ACTH receptor ACTH-R Adrenocorticotropin receptor Melanocortin receptor 2 MC2-R
Molecular Weight	34 kDa
Clonality	Polyclonal

Conjugation	Unconjugated
Isotype	IgG
Formulation	Liquid in PBS containing 50% glycerol, 0.5% BSA and 0.02% sodium azide.
Concentration	1 mg/ml
Storage Instruction	Store at -20°C, and avoid repeat freeze-thaw cycles.
Database Links	HGNC:69300MIM:202200
Alternative Names	Adrenocorticotrophic hormone receptor ACTH receptor ACTH-R Adrenocorticotropin receptor Melanocortin receptor 2 MC2-R
Function	Receptor for corticotropin (ACTH). This receptor is mediated by G proteins (G(s)) which activate adenylate cyclase (cAMP).
Cellular Localization	Cell membrane. Multi-pass membrane protein.

St John's Laboratory Ltd

F +44 (0)207 681 2580

T +44 (0)208 223 3081

W <http://www.stjohnslabs.com/>

E info@stjohnslabs.com