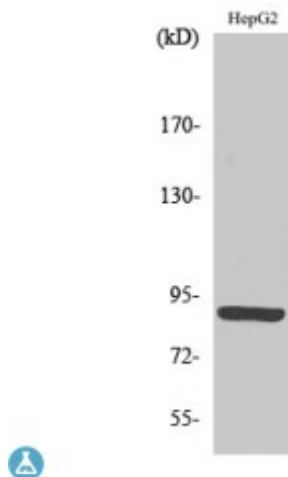


Anti-M-cadherin antibody



Description	Rabbit polyclonal to M-cadherin.
Model	STJ94042
Host	Rabbit
Reactivity	Human, Mouse, Rat
Applications	ELISA, IHC, WB
Immunogen	Synthesized peptide derived from human M-cadherin
Immunogen Region	50-130 aa, N-terminal
Gene ID	1013
Gene Symbol	CDH15
Dilution range	WB 1:500-1:2000IHC 1:100-1:300ELISA 1:10000
Specificity	M-cadherin Polyclonal Antibody detects endogenous levels of M-cadherin protein.
Tissue Specificity	Expressed in the brain and cerebellum.
Purification	The antibody was affinity-purified from rabbit antiserum by affinity-chromatography using epitope-specific immunogen.
Note	For Research Use Only (RUO).
Protein Name	Cadherin-15 Cadherin-14 Muscle cadherin M-cadherin
Molecular Weight	89 kDa
Clonality	Polyclonal

Conjugation	Unconjugated
Isotype	IgG
Formulation	Liquid in PBS containing 50% glycerol, 0.5% BSA and 0.02% sodium azide.
Concentration	1 mg/ml
Storage Instruction	Store at -20°C, and avoid repeat freeze-thaw cycles.
Database Links	HGNC:1754OMIM:114019
Alternative Names	Cadherin-15 Cadherin-14 Muscle cadherin M-cadherin
Function	Cadherins are calcium-dependent cell adhesion proteins. They preferentially interact with themselves in a homophilic manner in connecting cells; cadherins may thus contribute to the sorting of heterogeneous cell types. M-cadherin is part of the myogenic program and may provide a trigger for terminal muscle differentiation.
Sequence and Domain Family	Three calcium ions are usually bound at the interface of each cadherin domain and rigidify the connections, imparting a strong curvature to the full-length ectodomain.
Cellular Localization	Cell membrane. Single-pass type I membrane protein.