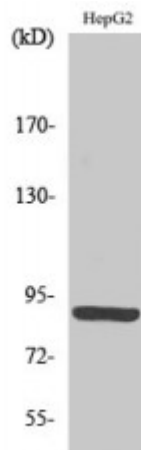


## Anti-M-cadherin antibody



<b>Description</b>	Rabbit polyclonal to M-cadherin.
<b>Model</b>	STJ94042
<b>Host</b>	Rabbit
<b>Reactivity</b>	Human, Mouse, Rat
<b>Applications</b>	ELISA, IHC, WB
<b>Immunogen</b>	Synthesized peptide derived from human M-cadherin
<b>Immunogen Region</b>	50-130 aa, N-terminal
<b>Gene ID</b>	<a href="#">1013</a>
<b>Gene Symbol</b>	<a href="#">CDH15</a>
<b>Dilution range</b>	WB 1:500-1:2000IHC 1:100-1:300ELISA 1:10000
<b>Specificity</b>	M-cadherin Polyclonal Antibody detects endogenous levels of M-cadherin protein.
<b>Tissue Specificity</b>	Expressed in the brain and cerebellum.
<b>Purification</b>	The antibody was affinity-purified from rabbit antiserum by affinity-chromatography using epitope-specific immunogen.
<b>Note</b>	For Research Use Only (RUO).
<b>Protein Name</b>	Cadherin-15 Cadherin-14 Muscle cadherin M-cadherin
<b>Molecular Weight</b>	89 kDa
<b>Clonality</b>	Polyclonal

<b>Conjugation</b>	Unconjugated
<b>Isotype</b>	IgG
<b>Formulation</b>	Liquid in PBS containing 50% glycerol, 0.5% BSA and 0.02% sodium azide.
<b>Concentration</b>	1 mg/ml
<b>Storage Instruction</b>	Store at -20°C, and avoid repeat freeze-thaw cycles.
<b>Database Links</b>	<a href="#">HGNC:1754OMIM:114019</a>
<b>Alternative Names</b>	Cadherin-15 Cadherin-14 Muscle cadherin M-cadherin
<b>Function</b>	Cadherins are calcium-dependent cell adhesion proteins. They preferentially interact with themselves in a homophilic manner in connecting cells; cadherins may thus contribute to the sorting of heterogeneous cell types. M-cadherin is part of the myogenic program and may provide a trigger for terminal muscle differentiation.
<b>Sequence and Domain Family</b>	Three calcium ions are usually bound at the interface of each cadherin domain and rigidify the connections, imparting a strong curvature to the full-length ectodomain.
<b>Cellular Localization</b>	Cell membrane. Single-pass type I membrane protein.

---

**St John's Laboratory Ltd**

**F** +44 (0)207 681 2580

**T** +44 (0)208 223 3081

**W** <http://www.stjohnslabs.com/>

**E** [info@stjohnslabs.com](mailto:info@stjohnslabs.com)