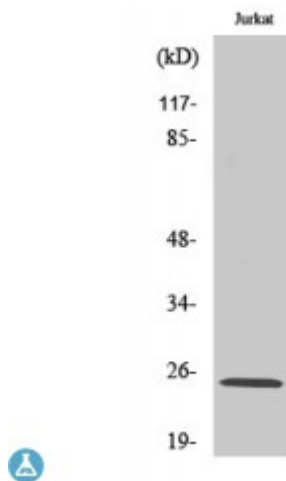


Anti-MDFI antibody



Description	Rabbit polyclonal to MDFI.
Model	STJ94053
Host	Rabbit
Reactivity	Human, Mouse
Applications	ELISA, WB
Immunogen	Synthesized peptide derived from human MDFI
Immunogen Region	80-160 aa, Internal
Gene ID	4188
Gene Symbol	MDFI
Dilution range	WB 1:500-1:2000ELISA 1:10000
Specificity	MDFI Polyclonal Antibody detects endogenous levels of MDFI protein.
Purification	The antibody was affinity-purified from rabbit antiserum by affinity-chromatography using epitope-specific immunogen.
Note	For Research Use Only (RUO).
Protein Name	MyoD family inhibitor Myogenic repressor I-mf
Molecular Weight	25 kDa
Clonality	Polyclonal
Conjugation	Unconjugated
Isotype	IgG

Formulation	Liquid in PBS containing 50% glycerol, 0.5% BSA and 0.02% sodium azide.
Concentration	1 mg/ml
Storage Instruction	Store at -20°C, and avoid repeat freeze-thaw cycles.
Database Links	HGNC:6967OMIM:604971
Alternative Names	MyoD family inhibitor Myogenic repressor I-mf
Function	Inhibits the transactivation activity of the Myod family of myogenic factors and represses myogenesis. Acts by associating with Myod family members and retaining them in the cytoplasm by masking their nuclear localization signals. Can also interfere with the DNA-binding activity of Myod family members. Plays an important role in trophoblast and chondrogenic differentiation. Regulates the transcriptional activity of TCF7L1/TCF3 by interacting directly with TCF7L1/TCF3 and preventing it from binding DNA. Binds to the axin complex, resulting in an increase in the level of free beta-catenin. Affects axin regulation of the WNT and JNK signaling pathways .
Cellular Localization	Nucleus Cytoplasm

St John's Laboratory Ltd

F +44 (0)207 681 2580

T +44 (0)208 223 3081

W <http://www.stjohnslabs.com/>

E info@stjohnslabs.com