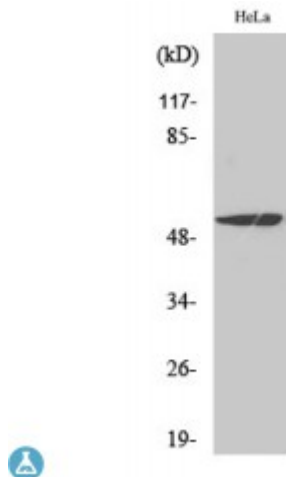


Anti-MEF-2 antibody



Description	Rabbit polyclonal to MEF-2.
Model	STJ94064
Host	Rabbit
Reactivity	Human, Mouse, Rat
Applications	ELISA, IF, IHC, WB
Immunogen	Synthesized peptide derived from human MEF-2 around the non-phosphorylation site of S408.
Immunogen Region	350-430 aa
Gene ID	4205
Gene Symbol	MEF2A
Dilution range	WB 1:500-1:2000IHC 1:100-1:300IF 1:200-1:1000ELISA 1:40000
Specificity	MEF-2 Polyclonal Antibody detects endogenous levels of MEF-2 protein.
Purification	The antibody was affinity-purified from rabbit antiserum by affinity-chromatography using epitope-specific immunogen.
Note	For Research Use Only (RUO).
Protein Name	Myocyte-specific enhancer factor 2A Serum response factor-like protein 1
Molecular Weight	55 kDa
Clonality	Polyclonal
Conjugation	Unconjugated

Isotype	IgG
Formulation	Liquid in PBS containing 50% glycerol, 0.5% BSA and 0.02% sodium azide.
Concentration	1 mg/ml
Storage Instruction	Store at -20°C, and avoid repeat freeze-thaw cycles.
Database Links	HGNC:6993 OMIM:600660
Alternative Names	Myocyte-specific enhancer factor 2A Serum response factor-like protein 1

St John's Laboratory Ltd

F +44 (0)207 681 2580

T +44 (0)208 223 3081

W <http://www.stjohnslabs.com/>

E info@stjohnslabs.com