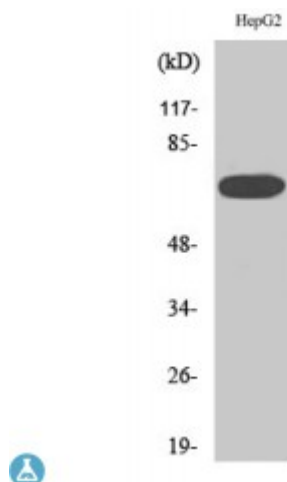


Anti-MEK Kinase-3 antibody



Description	Rabbit polyclonal to MEK Kinase-3.
Model	STJ94073
Host	Rabbit
Reactivity	Human, Mouse
Applications	ELISA, IF, IHC, WB
Immunogen	Synthesized peptide derived from human MEK Kinase-3
Immunogen Region	70-150 aa, Internal
Gene ID	4215
Gene Symbol	MAP3K3
Dilution range	WB 1:500-1:2000IHC 1:100-1:300IF 1:200-1:1000ELISA 1:20000
Specificity	MEK Kinase-3 Polyclonal Antibody detects endogenous levels of MEK Kinase-3 protein.
Purification	The antibody was affinity-purified from rabbit antiserum by affinity-chromatography using epitope-specific immunogen.
Note	For Research Use Only (RUO).
Protein Name	Mitogen-activated protein kinase kinase kinase 3 MAPK/ERK kinase kinase 3 MEK kinase 3 MEKK 3
Molecular Weight	71 kDa
Clonality	Polyclonal
Conjugation	Unconjugated

Isotype	IgG
Formulation	Liquid in PBS containing 50% glycerol, 0.5% BSA and 0.02% sodium azide.
Concentration	1 mg/ml
Storage Instruction	Store at -20°C, and avoid repeat freeze-thaw cycles.
Database Links	HGNC:6855 OMIM:602539
Alternative Names	Mitogen-activated protein kinase kinase kinase 3 MAPK/ERK kinase kinase 3 MEK kinase 3 MEKK 3
Function	Component of a protein kinase signal transduction cascade. Mediates activation of the NF-kappa-B, AP1 and DDIT3 transcriptional regulators.
Post-translational Modifications	Phosphorylation at Ser-166 and Ser-337 by SGK1 inhibits its activity.

St John's Laboratory Ltd

F +44 (0)207 681 2580

T +44 (0)208 223 3081

W <http://www.stjohnslabs.com/>

E info@stjohnslabs.com