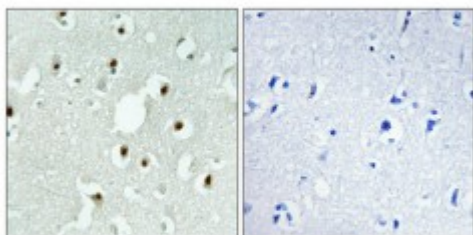


Anti-MLH3 antibody



Description	Rabbit polyclonal to MLH3.
Model	STJ94146
Host	Rabbit
Reactivity	Human
Applications	ELISA, IHC, WB
Immunogen	Synthesized peptide derived from human MLH3
Immunogen Region	490-570 aa, Internal
Gene ID	27030
Gene Symbol	MLH3
Dilution range	WB 1:500-1:2000IHC 1:100-1:300ELISA 1:40000
Specificity	MLH3 Polyclonal Antibody detects endogenous levels of MLH3 protein.
Tissue Specificity	Ubiquitous.
Purification	The antibody was affinity-purified from rabbit antiserum by affinity-chromatography using epitope-specific immunogen.
Note	For Research Use Only (RUO).
Protein Name	DNA mismatch repair protein Mlh3 MutL protein homolog 3
Molecular Weight	165 kDa
Clonality	Polyclonal
Conjugation	Unconjugated

Isotype	IgG
Formulation	Liquid in PBS containing 50% glycerol, 0.5% BSA and 0.02% sodium azide.
Concentration	1 mg/ml
Storage Instruction	Store at -20°C, and avoid repeat freeze-thaw cycles.
Database Links	HGNC:7128OMIM:114500
Alternative Names	DNA mismatch repair protein Mlh3 MutL protein homolog 3
Function	Probably involved in the repair of mismatches in DNA.
Cellular Localization	Nucleus

St John's Laboratory Ltd

F +44 (0)207 681 2580

T +44 (0)208 223 3081

W <http://www.stjohnslabs.com/>

E info@stjohnslabs.com