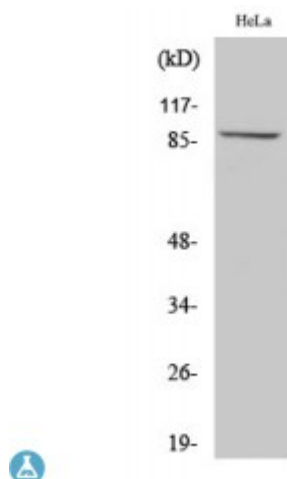


Anti-MLTK antibody



Description	Rabbit polyclonal to MLTK.
Model	STJ94155
Host	Rabbit
Reactivity	Human, Mouse
Applications	ELISA, IF, WB
Immunogen	Synthesized peptide derived from human MLTK
Immunogen Region	670-750 aa, C-terminal
Gene ID	51776
Gene Symbol	MAP3K20
Dilution range	WB 1:500-1:2000IF 1:200-1:1000ELISA 1:20000
Specificity	MLTK Polyclonal Antibody detects endogenous levels of MLTK protein.
Purification	The antibody was affinity-purified from rabbit antiserum by affinity-chromatography using epitope-specific immunogen.
Note	For Research Use Only (RUO).
Protein Name	Mitogen-activated protein kinase kinase kinase 20 Human cervical cancer suppressor gene 4 protein HCCS-4 Leucine zipper- and sterile alpha motif-containing kinase MLK-like mitogen-activated protein triple kinase Mitogen-activ
Molecular Weight	91 kDa
Clonality	Polyclonal

Conjugation	Unconjugated
Isotype	IgG
Formulation	Liquid in PBS containing 50% glycerol, 0.5% BSA and 0.02% sodium azide.
Concentration	1 mg/ml
Storage Instruction	Store at -20°C, and avoid repeat freeze-thaw cycles.
Database Links	HGNC:17797OMIM:609479
Alternative Names	Mitogen-activated protein kinase kinase kinase 20 Human cervical cancer suppressor gene 4 protein HCCS-4 Leucine zipper- and sterile alpha motif-containing kinase MLK-like mitogen-activated protein triple kinase Mitogen-activ

St John's Laboratory Ltd

F +44 (0)207 681 2580

T +44 (0)208 223 3081

W <http://www.stjohnslabs.com/>

E info@stjohnslabs.com