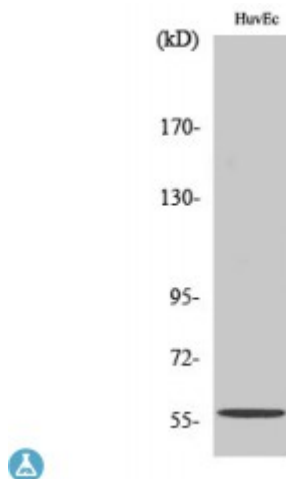


Anti-MMP-19 antibody



Description	Rabbit polyclonal to MMP-19.
Model	STJ94162
Host	Rabbit
Reactivity	Human, Mouse
Applications	ELISA, IHC, WB
Immunogen	Synthesized peptide derived from human MMP-19
Immunogen Region	30-110 aa, N-terminal
Gene ID	4327
Gene Symbol	MMP19
Dilution range	WB 1:500-1:2000IHC 1:100-1:300ELISA 1:10000
Specificity	MMP-19 Polyclonal Antibody detects endogenous levels of MMP-19 protein.
Tissue Specificity	Expressed in mammary gland, placenta, lung, pancreas, ovary, small intestine, spleen, thymus, prostate, testis colon, heart and blood vessel walls. Not detected in brain and peripheral blood leukocytes. Also expressed in the synovial fluid of normal and rheumatoid patients .
Purification	The antibody was affinity-purified from rabbit antiserum by affinity-chromatography using epitope-specific immunogen.
Note	For Research Use Only (RUO).
Protein Name	Matrix metalloproteinase-19 MMP-19 Matrix metalloproteinase RASI Matrix metalloproteinase-18 MMP-18

Molecular Weight	57 kDa
Clonality	Polyclonal
Conjugation	Unconjugated
Isotype	IgG
Formulation	Liquid in PBS containing 50% glycerol, 0.5% BSA and 0.02% sodium azide.
Concentration	1 mg/ml
Storage Instruction	Store at -20°C, and avoid repeat freeze-thaw cycles.
Database Links	HGNC:71650 MIM:601807
Alternative Names	Matrix metalloproteinase-19 MMP-19 Matrix metalloproteinase RASI Matrix metalloproteinase-18 MMP-18
Function	Endopeptidase that degrades various components of the extracellular matrix, such as aggrecan and cartilage oligomeric matrix protein (comp), during development, haemostasis and pathological conditions (arthritic disease). May also play a role in neovascularization or angiogenesis. Hydrolyzes collagen type IV, laminin, nidogen, nasrin-C isoform, fibronectin, and type I gelatin.
Sequence and Domain Family	The conserved cysteine present in the cysteine-switch motif binds the catalytic zinc ion, thus inhibiting the enzyme. The dissociation of the cysteine from the zinc ion upon the activation-peptide release activates the enzyme.
Cellular Localization	Secreted, extracellular space, extracellular matrix
Post-translational Modifications	Activated by autolytic cleavage after Lys-97.; Tyrosine phosphorylated by PKDCC/VLK.

St John's Laboratory Ltd

F +44 (0)207 681 2580

T +44 (0)208 223 3081

W <http://www.stjohnslabs.com/>

E info@stjohnslabs.com