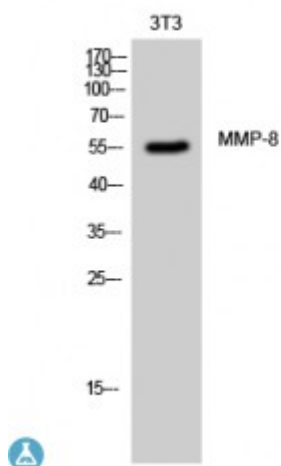


Anti-MMP-8 antibody



Description	Rabbit polyclonal to MMP-8.
Model	STJ94165
Host	Rabbit
Reactivity	Human, Mouse, Rat
Applications	ELISA, IHC, WB
Immunogen	Synthesized peptide derived from human MMP-8
Immunogen Region	390-470 aa, C-terminal
Gene ID	4317
Gene Symbol	MMP8
Dilution range	WB 1:500-1:2000IHC 1:100-1:300ELISA 1:20000
Specificity	MMP-8 Polyclonal Antibody detects endogenous levels of MMP-8 protein.
Tissue Specificity	Neutrophils.
Purification	The antibody was affinity-purified from rabbit antiserum by affinity-chromatography using epitope-specific immunogen.
Note	For Research Use Only (RUO).
Protein Name	Neutrophil collagenase Matrix metalloproteinase-8 MMP-8 PMNL collagenase PMNL-CL
Molecular Weight	55 kDa
Clonality	Polyclonal

Conjugation	Unconjugated
Isotype	IgG
Formulation	Liquid in PBS containing 50% glycerol, 0.5% BSA and 0.02% sodium azide.
Concentration	1 mg/ml
Storage Instruction	Store at -20°C, and avoid repeat freeze-thaw cycles.
Database Links	HGNC:7175OMIM:120355
Alternative Names	Neutrophil collagenase Matrix metalloproteinase-8 MMP-8 PMNL collagenase PMNL-CL
Function	Can degrade fibrillar type I, II, and III collagens.
Sequence and Domain Family	The conserved cysteine present in the cysteine-switch motif binds the catalytic zinc ion, thus inhibiting the enzyme. The dissociation of the cysteine from the zinc ion upon the activation-peptide release activates the enzyme.
Cellular Localization	Cytoplasmic granule. Secreted, extracellular space, extracellular matrix. Stored in intracellular granules.

St John's Laboratory Ltd

F +44 (0)207 681 2580

T +44 (0)208 223 3081

W <http://www.stjohnslabs.com/>

E info@stjohnslabs.com