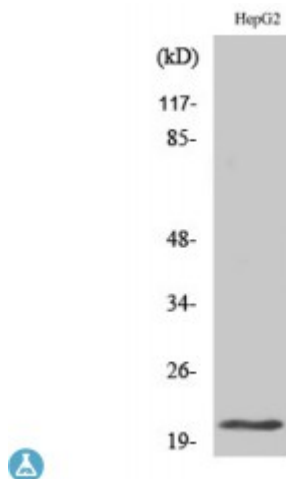


Anti-MRP-L41 antibody



Description	Rabbit polyclonal to MRP-L41.
Model	STJ94228
Host	Rabbit
Reactivity	Human, Mouse, Rat
Applications	ELISA, IHC, WB
Immunogen	Synthesized peptide derived from human MRP-L41
Immunogen Region	50-130 aa, Internal
Gene ID	64975
Gene Symbol	MRPL41
Dilution range	WB 1:500-1:2000IHC 1:100-1:300ELISA 1:40000
Specificity	MRP-L41 Polyclonal Antibody detects endogenous levels of MRP-L41 protein.
Tissue Specificity	Present in kidney, liver, thymus and testis, and at lower level in brain and spleen (at protein level).
Purification	The antibody was affinity-purified from rabbit antiserum by affinity-chromatography using epitope-specific immunogen.
Note	For Research Use Only (RUO).
Protein Name	39S ribosomal protein L41, mitochondrial L41mt MRP-L41 39S ribosomal protein L27 homolog Bcl-2-interacting mitochondrial ribosomal protein L41 Cell proliferation-inducing gene 3 protein MRP-L27 homolog Mitochondri

Molecular Weight	21 kDa
Clonality	Polyclonal
Conjugation	Unconjugated
Isotype	IgG
Formulation	Liquid in PBS containing 50% glycerol, 0.5% BSA and 0.02% sodium azide.
Concentration	1 mg/ml
Storage Instruction	Store at -20°C, and avoid repeat freeze-thaw cycles.
Database Links	HGNC:14492OMIM:611846
Alternative Names	39S ribosomal protein L41, mitochondrial L41mt MRP-L41 39S ribosomal protein L27 homolog Bcl-2-interacting mitochondrial ribosomal protein L41 Cell proliferation-inducing gene 3 protein MRP-L27 homolog Mitochondri
Function	Component of the mitochondrial ribosome large subunit . Also involved in apoptosis and cell cycle . Enhances p53/TP53 stability, thereby contributing to p53/TP53-induced apoptosis in response to growth-inhibitory condition. Enhances p53/TP53 translocation to the mitochondria. Has the ability to arrest the cell cycle at the G1 phase, possibly by stabilizing the CDKN1A and CDKN1B (p27Kip1) proteins .
Cellular Localization	Mitochondrion