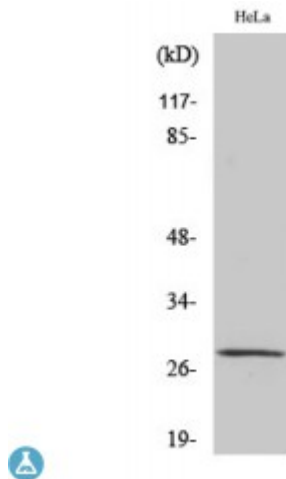


Anti-MRRF antibody



Description	Rabbit polyclonal to MRRF.
Model	STJ94259
Host	Rabbit
Reactivity	Human, Mouse, Rat
Applications	ELISA, IHC, WB
Immunogen	Synthesized peptide derived from human MRRF
Immunogen Region	150-230 aa, C-terminal
Gene ID	92399
Gene Symbol	MRRF
Dilution range	WB 1:500-1:2000IHC 1:100-1:300ELISA 1:20000
Specificity	MRRF Polyclonal Antibody detects endogenous levels of MRRF protein.
Purification	The antibody was affinity-purified from rabbit antiserum by affinity-chromatography using epitope-specific immunogen.
Note	For Research Use Only (RUO).
Protein Name	Ribosome-recycling factor, mitochondrial RRF Ribosome-releasing factor, mitochondrial
Molecular Weight	28 kDa
Clonality	Polyclonal
Conjugation	Unconjugated

Isotype	IgG
Formulation	Liquid in PBS containing 50% glycerol, 0.5% BSA and 0.02% sodium azide.
Concentration	1 mg/ml
Storage Instruction	Store at -20°C, and avoid repeat freeze-thaw cycles.
Database Links	HGNC:7234 OMIM:604602
Alternative Names	Ribosome-recycling factor, mitochondrial RRF Ribosome-releasing factor, mitochondrial
Function	Responsible for the release of ribosomes from messenger RNA at the termination of protein biosynthesis. May increase the efficiency of translation by recycling ribosomes from one round of translation to another .
Cellular Localization	Mitochondrion

St John's Laboratory Ltd

F +44 (0)207 681 2580

T +44 (0)208 223 3081

W <http://www.stjohnslabs.com/>

E info@stjohnslabs.com