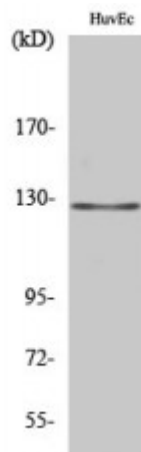


Anti-MSH3 antibody



Description	Rabbit polyclonal to MSH3.
Model	STJ94262
Host	Rabbit
Reactivity	Human
Applications	ELISA, IHC, WB
Immunogen	Synthesized peptide derived from human MSH3
Immunogen Region	30-110 aa, N-terminal
Gene ID	4437
Gene Symbol	MSH3
Dilution range	WB 1:500-1:2000IHC 1:100-1:300ELISA 1:20000
Specificity	MSH3 Polyclonal Antibody detects endogenous levels of MSH3 protein.
Purification	The antibody was affinity-purified from rabbit antiserum by affinity-chromatography using epitope-specific immunogen.
Note	For Research Use Only (RUO).
Protein Name	DNA mismatch repair protein Msh3 hMSH3 Divergent upstream protein DUP Mismatch repair protein 1 MRP1
Molecular Weight	127 kDa
Clonality	Polyclonal
Conjugation	Unconjugated

Isotype	IgG
Formulation	Liquid in PBS containing 50% glycerol, 0.5% BSA and 0.02% sodium azide.
Concentration	1 mg/ml
Storage Instruction	Store at -20°C, and avoid repeat freeze-thaw cycles.
Database Links	HGNC:7326OMIM:600887
Alternative Names	DNA mismatch repair protein Msh3 hMSH3 Divergent upstream protein DUP Mismatch repair protein 1 MRP1
Function	Component of the post-replicative DNA mismatch repair system (MMR). Heterodimerizes with MSH2 to form MutS beta which binds to DNA mismatches thereby initiating DNA repair. When bound, the MutS beta heterodimer bends the DNA helix and shields approximately 20 base pairs. MutS beta recognizes large insertion-deletion loops (IDL) up to 13 nucleotides long. After mismatch binding, forms a ternary complex with the MutL alpha heterodimer, which is thought to be responsible for directing the downstream MMR events, including strand discrimination, excision, and resynthesis.