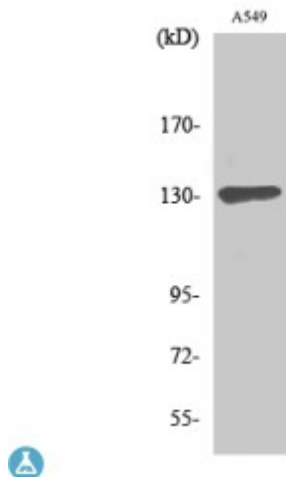


## Anti-Sin3B antibody



<b>Description</b>	Rabbit polyclonal to Sin3B.
<b>Model</b>	STJ94263
<b>Host</b>	Rabbit
<b>Reactivity</b>	Human
<b>Applications</b>	ELISA, IF, WB
<b>Immunogen</b>	Synthesized peptide derived from human Sin3B
<b>Immunogen Region</b>	190-270 aa, Internal
<b>Gene ID</b>	<a href="#">23309</a>
<b>Gene Symbol</b>	<a href="#">SIN3B</a>
<b>Dilution range</b>	WB 1:500-1:2000IF 1:200-1:1000ELISA 1:10000
<b>Specificity</b>	Sin3B Polyclonal Antibody detects endogenous levels of Sin3B protein.
<b>Purification</b>	The antibody was affinity-purified from rabbit antiserum by affinity-chromatography using epitope-specific immunogen.
<b>Note</b>	For Research Use Only (RUO).
<b>Protein Name</b>	Paired amphipathic helix protein Sin3b Histone deacetylase complex subunit Sin3b Transcriptional corepressor Sin3b
<b>Molecular Weight</b>	130 kDa
<b>Clonality</b>	Polyclonal
<b>Conjugation</b>	Unconjugated

<b>Isotype</b>	IgG
<b>Formulation</b>	Liquid in PBS containing 50% glycerol, 0.5% BSA and 0.02% sodium azide.
<b>Concentration</b>	1 mg/ml
<b>Storage Instruction</b>	Store at -20°C, and avoid repeat freeze-thaw cycles.
<b>Database Links</b>	<a href="#">HGNC:19354</a> <a href="#">OMIM:607777</a>
<b>Alternative Names</b>	Paired amphipathic helix protein Sin3b Histone deacetylase complex subunit Sin3b Transcriptional corepressor Sin3b
<b>Function</b>	Acts as a transcriptional repressor. Interacts with MXI1 to repress MYC responsive genes and antagonize MYC oncogenic activities. Interacts with MAD-MAX heterodimers by binding to MAD. The heterodimer then represses transcription by tethering SIN3B to DNA. Also forms a complex with FOXK1 which represses transcription. With FOXK1, regulates cell cycle progression probably by repressing cell cycle inhibitor genes expression.
<b>Cellular Localization</b>	Nucleus
<b>Post-translational Modifications</b>	Ubiquitinated by RNF220 that leads to proteasomal degradation.

---

**St John's Laboratory Ltd**

**F** +44 (0)207 681 2580

**T** +44 (0)208 223 3081

**W** <http://www.stjohnslabs.com/>

**E** [info@stjohnslabs.com](mailto:info@stjohnslabs.com)