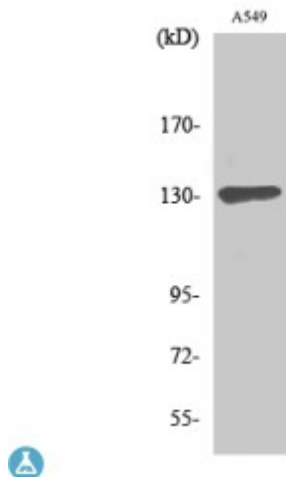


Anti-Sin3B antibody



Description	Rabbit polyclonal to Sin3B.
Model	STJ94263
Host	Rabbit
Reactivity	Human
Applications	ELISA, IF, WB
Immunogen	Synthesized peptide derived from human Sin3B
Immunogen Region	190-270 aa, Internal
Gene ID	23309
Gene Symbol	SIN3B
Dilution range	WB 1:500-1:2000IF 1:200-1:1000ELISA 1:10000
Specificity	Sin3B Polyclonal Antibody detects endogenous levels of Sin3B protein.
Purification	The antibody was affinity-purified from rabbit antiserum by affinity-chromatography using epitope-specific immunogen.
Note	For Research Use Only (RUO).
Protein Name	Paired amphipathic helix protein Sin3b Histone deacetylase complex subunit Sin3b Transcriptional corepressor Sin3b
Molecular Weight	130 kDa
Clonality	Polyclonal
Conjugation	Unconjugated

Isotype	IgG
Formulation	Liquid in PBS containing 50% glycerol, 0.5% BSA and 0.02% sodium azide.
Concentration	1 mg/ml
Storage Instruction	Store at -20°C, and avoid repeat freeze-thaw cycles.
Database Links	HGNC:19354 OMIM:607777
Alternative Names	Paired amphipathic helix protein Sin3b Histone deacetylase complex subunit Sin3b Transcriptional corepressor Sin3b
Function	Acts as a transcriptional repressor. Interacts with MXI1 to repress MYC responsive genes and antagonize MYC oncogenic activities. Interacts with MAD-MAX heterodimers by binding to MAD. The heterodimer then represses transcription by tethering SIN3B to DNA. Also forms a complex with FOXK1 which represses transcription. With FOXK1, regulates cell cycle progression probably by repressing cell cycle inhibitor genes expression.
Cellular Localization	Nucleus
Post-translational Modifications	Ubiquitinated by RNF220 that leads to proteasomal degradation.

St John's Laboratory Ltd

F +44 (0)207 681 2580

T +44 (0)208 223 3081

W <http://www.stjohnslabs.com/>

E info@stjohnslabs.com