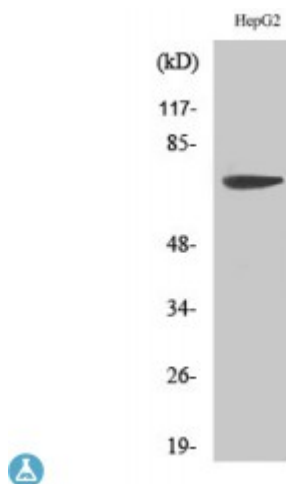


Anti-MMP-16 antibody



Description	Rabbit polyclonal to MMP-16.
Model	STJ94277
Host	Rabbit
Reactivity	Human, Mouse, Rat
Applications	ELISA, IHC, WB
Immunogen	Synthesized peptide derived from human MMP-16
Immunogen Region	520-600 aa, C-terminal
Gene ID	4325
Gene Symbol	MMP16
Dilution range	WB 1:500-1:2000IHC 1:100-1:300ELISA 1:10000
Specificity	MMP-16 Polyclonal Antibody detects endogenous levels of MMP-16 protein.
Tissue Specificity	Expressed in heart, brain, placenta, ovary and small intestine. Isoform Short is found in the ovary.
Purification	The antibody was affinity-purified from rabbit antiserum by affinity-chromatography using epitope-specific immunogen.
Note	For Research Use Only (RUO).
Protein Name	Matrix metalloproteinase-16 MMP-16 MMP-X2 Membrane-type matrix metalloproteinase 3 MT-MMP 3 MTMMP3 Membrane-type-3 matrix metalloproteinase MT3-MMP MT3MMP
Molecular Weight	70 kDa

Clonality	Polyclonal
Conjugation	Unconjugated
Isotype	IgG
Formulation	Liquid in PBS containing 50% glycerol, 0.5% BSA and 0.02% sodium azide.
Concentration	1 mg/ml
Storage Instruction	Store at -20°C, and avoid repeat freeze-thaw cycles.
Database Links	HGNC:7162OMIM:602262
Alternative Names	Matrix metalloproteinase-16 MMP-16 MMP-X2 Membrane-type matrix metalloproteinase 3 MT-MMP 3 MTMMP3 Membrane-type-3 matrix metalloproteinase MT3-MMP MT3MMP
Function	Endopeptidase that degrades various components of the extracellular matrix, such as collagen type III and fibronectin. Activates progelatinase A. Involved in the matrix remodeling of blood vessels. Isoform short cleaves fibronectin and also collagen type III, but at lower rate. It has no effect on type I, II, IV and V collagen. However, upon interaction with CSPG4, it may be involved in degradation and invasion of type I collagen by melanoma cells.
Sequence and Domain Family	The conserved cysteine present in the cysteine-switch motif binds the catalytic zinc ion, thus inhibiting the enzyme. The dissociation of the cysteine from the zinc ion upon the activation-peptide release activates the enzyme.
Cellular Localization	Isoform Long: Cell membrane. Localized at the cell surface of melanoma cells.. Isoform Short: Secreted, extracellular space, extracellular matrix. Cell surface. Localized at the cell surface of melanoma cells.
Post-translational Modifications	The precursor is cleaved by a furin endopeptidase.