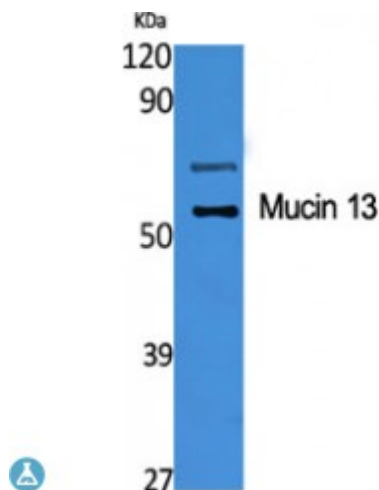


## Anti-Mucin 13 antibody



<b>Description</b>	Rabbit polyclonal to Mucin 13.
<b>Model</b>	STJ94286
<b>Host</b>	Rabbit
<b>Reactivity</b>	Human
<b>Applications</b>	ELISA, IF, IHC, WB
<b>Immunogen</b>	Synthesized peptide derived from human Mucin 13
<b>Immunogen Region</b>	390-470 aa, C-terminal
<b>Gene ID</b>	<a href="#">56667</a>
<b>Gene Symbol</b>	<a href="#">MUC13</a>
<b>Dilution range</b>	WB 1:500-1:2000IHC 1:100-1:300IF 1:200-1:1000ELISA 1:20000
<b>Specificity</b>	Mucin 13 Polyclonal Antibody detects endogenous levels of Mucin 13 protein.
<b>Tissue Specificity</b>	Highly expressed in epithelial tissues, particularly those of the gastrointestinal and respiratory tracts, such as large intestine and trachea, followed by kidney, small intestine, appendix and stomach.
<b>Purification</b>	The antibody was affinity-purified from rabbit antiserum by affinity-chromatography using epitope-specific immunogen.
<b>Note</b>	For Research Use Only (RUO).
<b>Protein Name</b>	Mucin-13 MUC-13 Down-regulated in colon cancer 1
<b>Molecular Weight</b>	55 65 kDa

<b>Clonality</b>	Polyclonal
<b>Conjugation</b>	Unconjugated
<b>Isotype</b>	IgG
<b>Formulation</b>	Liquid in PBS containing 50% glycerol, 0.5% BSA and 0.02% sodium azide.
<b>Concentration</b>	1 mg/ml
<b>Storage Instruction</b>	Store at -20°C, and avoid repeat freeze-thaw cycles.
<b>Database Links</b>	<a href="#">HGNC:7511OMIM:612181</a>
<b>Alternative Names</b>	Mucin-13 MUC-13 Down-regulated in colon cancer 1
<b>Function</b>	Epithelial and hemopoietic transmembrane mucin that may play a role in cell signaling.
<b>Cellular Localization</b>	Cell membrane Apical cell membrane Secreted. Also exists as a soluble form.
<b>Post-translational Modifications</b>	Cleaved into two subunits, alpha and beta, probably between the first EGF domain and the SEA domain. Beta subunit contains the cytoplasmic tail and alpha subunit the extracellular tail. The homooligomerization into dimers is dependent on intrachain disulfide bonds.; Highly N-glycosylated.