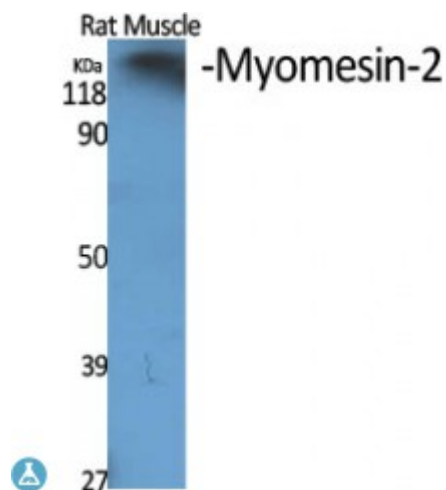


Anti-Myomesin-2 antibody



Description	Rabbit polyclonal to Myomesin-2.
Model	STJ94312
Host	Rabbit
Reactivity	Human, Mouse, Simian
Applications	ELISA, WB
Immunogen	Synthesized peptide derived from human Myomesin-2
Immunogen Region	590-670 aa, Internal
Gene ID	9172
Gene Symbol	MYOM2
Dilution range	WB 1:500-1:2000ELISA 1:40000
Specificity	Myomesin-2 Polyclonal Antibody detects endogenous levels of Myomesin-2 protein.
Purification	The antibody was affinity-purified from rabbit antiserum by affinity-chromatography using epitope-specific immunogen.
Note	For Research Use Only (RUO).
Protein Name	Myomesin-2 165 kDa connectin-associated protein 165 kDa titin-associated protein M-protein Myomesin family member 2
Molecular Weight	165 kDa
Clonality	Polyclonal
Conjugation	Unconjugated

Isotype	IgG
Formulation	Liquid in PBS containing 50% glycerol, 0.5% BSA and 0.02% sodium azide.
Concentration	1 mg/ml
Storage Instruction	Store at -20°C, and avoid repeat freeze-thaw cycles.
Database Links	HGNC:7614OMIM:603509
Alternative Names	Myomesin-2 165 kDa connectin-associated protein 165 kDa titin-associated protein M-protein Myomesin family member 2
Function	Major component of the vertebrate myofibrillar M band. Binds myosin, titin, and light meromyosin. This binding is dose dependent.
Cellular Localization	Cytoplasm, myofibril, sarcomere, M line

St John's Laboratory Ltd

F +44 (0)207 681 2580

T +44 (0)208 223 3081

W <http://www.stjohnslabs.com/>

E info@stjohnslabs.com