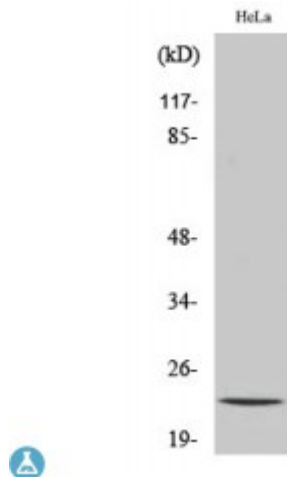


Anti-Myp antibody



Description	Rabbit polyclonal to Myp.
Model	STJ94318
Host	Rabbit
Reactivity	Human
Applications	ELISA, IF, IHC, WB
Immunogen	Synthesized peptide derived from human Myp
Immunogen Region	130-210 aa, C-terminal
Dilution range	WB 1:500-1:2000IHC 1:100-1:300IF 1:200-1:1000ELISA 1:20000
Specificity	Myp Polyclonal Antibody detects endogenous levels of Myp protein.
Purification	The antibody was affinity-purified from rabbit antiserum by affinity-chromatography using epitope-specific immunogen.
Note	For Research Use Only (RUO).
Protein Name	Nucleolar protein 3 Apoptosis repressor with CARD Muscle-enriched cytoplasmic protein Myp Nucleolar protein of 30 kDa Nop30
Molecular Weight	28 kDa
Clonality	Polyclonal
Conjugation	Unconjugated
Isotype	IgG
Formulation	Liquid in PBS containing 50% glycerol, 0.5% BSA and 0.02% sodium azide.

Concentration	1 mg/ml
Storage Instruction	Store at -20°C, and avoid repeat freeze-thaw cycles.
Alternative Names	Nucleolar protein 3 Apoptosis repressor with CARD Muscle-enriched cytoplasmic protein Myp Nucleolar protein of 30 kDa Nop30

St John's Laboratory Ltd

F +44 (0)207 681 2580

T +44 (0)208 223 3081

W <http://www.stjohnslabs.com/>

E info@stjohnslabs.com