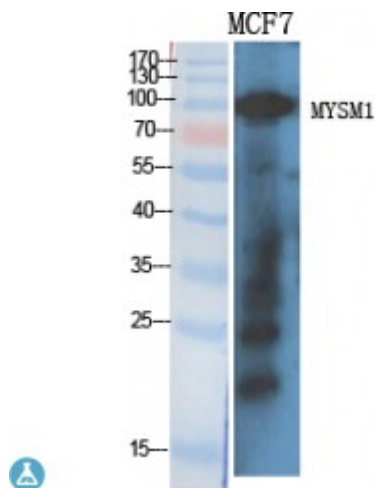


Anti-MYSM1 antibody



Description	Rabbit polyclonal to MYSM1.
Model	STJ94322
Host	Rabbit
Reactivity	Human
Applications	ELISA, IHC, WB
Immunogen	Synthesized peptide derived from human MYSM1
Immunogen Region	490-570 aa, Internal
Gene ID	114803
Gene Symbol	MYSM1
Dilution range	WB 1:500-1:2000IHC 1:100-1:300ELISA 1:40000
Specificity	MYSM1 Polyclonal Antibody detects endogenous levels of MYSM1 protein.
Purification	The antibody was affinity-purified from rabbit antiserum by affinity-chromatography using epitope-specific immunogen.
Note	For Research Use Only (RUO).
Protein Name	Histone H2A deubiquitinase MYSM1 2A-DUB Myb-like, SWIRM and MPN domain-containing protein 1
Molecular Weight	95 kDa
Clonality	Polyclonal
Conjugation	Unconjugated

Isotype	IgG
Formulation	Liquid in PBS containing 50% glycerol, 0.5% BSA and 0.02% sodium azide.
Concentration	1 mg/ml
Storage Instruction	Store at -20°C, and avoid repeat freeze-thaw cycles.
Database Links	HGNC:29401 OMIM:612176
Alternative Names	Histone H2A deubiquitinase MYSM1 2A-DUB Myb-like, SWIRM and MPN domain-containing protein 1
Function	Metalloprotease that specifically deubiquitinates monoubiquitinated histone H2A, a specific tag for epigenetic transcriptional repression, thereby acting as a coactivator. Preferentially deubiquitinates monoubiquitinated H2A in hyperacetylated nucleosomes. Deubiquitination of histone H2A leads to facilitate the phosphorylation and dissociation of histone H1 from the nucleosome. Acts as a coactivator by participating in the initiation and elongation steps of androgen receptor (AR)-induced gene activation.
Sequence and Domain Family	Binds double-stranded DNA via the SANT domain. The SWIRM domain does not bind double-stranded DNA.
Cellular Localization	Nucleus

St John's Laboratory Ltd

F +44 (0)207 681 2580

T +44 (0)208 223 3081

W <http://www.stjohnslabs.com/>

E info@stjohnslabs.com